

*H. C. Swanston*

Littleton,  
LITHGOW.

# ACKLAND'S SPECIAL CATALOGUE OF Australian Commonwealth Stamps

FULLY ILLUSTRATED.



Stamp Commemorating the 150th Anniversary of the  
Settlement of Australia.



Published by

**Wm. ACKLAND.**

(Box 1140 K, G.P.O.)

ALSTON'S BUILDINGS

Corner Collins & Elizabeth  
Streets

MELBOURNE, C.1

MAY, 1945.



Price, 1/-

Posted, 1/2.

WM. ACKLAND, DEALER IN AUSTRALIAN AND FOREIGN STAMPS:

---

W<sup>M</sup>. ACKLAND,

Established 1892.

OLDEST FIRM IN VICTORIA

DEALING EXCLUSIVELY IN

POSTAGE STAMPS AND  
PHILATELIC GOODS.

Fifty-two Years of Progressive Business.

---

FINE STOCK OF

RARE OLD STAMPS

ALSO MEDIUM AND RECENT ISSUES.

---

COLLECTORS CAN RELY ON PROMPTITUDE IN THE DESPATCH OF ORDERS.

---

A well-trained Staff continually employed in the preparation of Packets, Sets, and Approval Sheets.

Packets and Sets are prepared from stock, partly the accumulation of the last 50 years, which gives them an exceptional value, as they contain many varieties of which other Dealers have no stock.

---

BUY WITH CONFIDENCE FROM THE OLD, RELIABLE FIRM.

---

SATISFACTION GUARANTEED.

---

Testimonials continually arriving from all parts of the Commonwealth and abroad, testifying to the good value and excellent condition of Stamps supplied, also their superiority over others.

---

ALTSON'S BUILDING, CORNER COLLINS AND ELIZABETH  
STREETS, MELBOURNE.

# AUSTRALIAN COMMONWEALTH



*H. C. Swanson*

15 Tobruk St.,

Littleton,

LITHGOW.

## COLLECT AUSTRALIAN COMMONWEALTH STAMPS



THE KANGAROO SERIES—Continued.

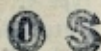


Type 5.

Small Multiple Watermark.

Printed by John Ash, Commonwealth Note and Stamp Printer, Melbourne. 1929-32—Design as Type 1. Wmk. as Type 5. Perf. 11½, 12. Typo. Sheets of 120.

No		Embossed.	Usual.
		s. d.	s. d.
39.	6d. chestnut ..	2 0	0 4
40.	9d. violet ..	4 0	0 6
41.	1s. green ..	3 6	0 3
42.	2s. claret ..	0 6	0 9
43.	5s. grey & yel. ..	—	10 0
44.	10s. grey & pink ..	—	—
45.	£2 black & rose ..	—	—



Type 6.

Official: No. 39 overprinted as Type 6. 46. 6d. chestnut .. 4 6 3 6



Type 7.

Small Multiple C of A. Watermark. Printed by John Ash.

1932-38—Design as Type 1. Wmk. as Type 7. Perf. 11½, 12. Typo. Sheets of 120.

47.	6d. chestnut ..	2 0	2 0
48.	9d. violet ..	2 6	0 3
49.	2s. marone ..	2 6	0 2
50.	5s. grey & yel. ..	18 0	6 0
51.	10s. grey & pink ..	—	27 0
52.	£1 grey ..	—	40 0
53.	£2 black & rose ..	—	60 0

Official: No. 47 overprinted as Type 6. 54. 6d. chestnut .. 2 6 2 0

THE 1914 KOOKABURRA STAMP.



Kookaburra. Type 8

Engraved and printed by T. S. Harrison, Commonwealth Note and Stamp Printer, Melbourne.

August, 1914—Design as Type 8. No Wmk. Perf. 11 x 11. Recess Sheets of 120. Plate Nos. 1, 2, 3, 4. 55. 6d. claret .. 9 6 7 6

Plate Nos. 1, 2, 3 or 4  
Each per pair .. 80 0 —  
Each per Strip of 4.  
including Imprint.. 100 0 —

THE KING GEORGE V. SERIES.



Type 9 (King George V.)

Engraved and printed by T. S. Harrison, Commonwealth Note and Stamp Printer, Melbourne.

December, 1913—Design as Type 9. No wmk. Perf. 11 x 11. Recess Sheets of 120. Plate Nos. 1, 2, 3, 4.

56.	1d. red ..	1 0	0 9
57.	1d. pale rose-red ..	1 3	1 3
	Plate No. 1, pale, pair ..	12 0	—
	Plate Nos. 2, 3, 4.		
	Each per pair ..	10 0	—
	Imprint, Strip of 4 ..	15 0	—

WM. ACKLAND, DEALER IN AUSTRALIAN AND FOREIGN STAMPS

15 Tobruk St.,

THE KING GEORGE V. SERIES—Continued.



Type 10 (King George V.)

Georgian Watermark.

Dies engraved by Perkins, Bacon & Co., London. Printed by J. B. Cooke until 1918 and then by T. S. Harrison.

1914-24—Design as Type 10 Wmk. as Type 3. Perf. 14 x 14. Typo. Sheets of 120.

	Unused.		Used.	
	s.	d.	s.	d.
58. 1/4d. green ..	0	4	0	2
59. 1/4d. pale green ..	0	6	0	2
60. 1/4d. orange ..	0	4	0	2
61. 1/4d. red ..	0	6	0	1
61A. 1/4d. red, rough ppr. —	0	6		
62. 1d. deep red ..	1	0	0	6
62A. 1d. lilac ..	1	0	0	1
63. 1d. sage-green ..	0	4	0	1
64. 1 1/4d. black-brown ..	0	9	0	2
65. 1 1/4d. chocolate ..	0	9	0	1
65A. 1 1/4d. red-brown ..	2	0	0	6
66. 1 1/4d. green ..	0	9	0	1
67. 1 1/4d. red ..	0	6	0	1
68. 2d. orange ..	1	3	0	1
69. 2d. pale rose ..	0	9	0	1
70. 2d. chocolate ..	1	6	0	4
71. 3d. blue ..	1	6	0	1
72. 4d. lemon ..	4	0	1	6
73. 4d. orange ..	2	5	0	4
74. 4d. pale orange ..	7	6	1	6
75. 4d. lilac ..	2	6	1	0
76. 4d. blue ..	3	6	0	4
77. 4d. olive ..	2	6	0	6
78. 4 1/4d. violet ..	3	0	0	6
79. 5d. brown ..	4	0	0	9
80. 5d. yel.-brown ..	3	6	0	6
81. 1s. 4d. blue ..	7	6	3	0
71A. 3d. blue, Imperf. on 3 sides—				
Each ..	£	8	—	
Pair ..	£	16	—	

Type 11  
(Large Multiple Watermark)  
Printed by J. B. Cooke or  
T. S. Harrison

1918-24: Design as Type 10. Wmk. as Type 11. Perf. 14. Typo. Sheets of 120.

82. 1/4d. green ..	0	4	0	1
83. 1/4d. pale green ..	0	6	0	1
84. 1d. pale red, Cook 12	6	8	6	
85. 1d. dark red ..	1	3	0	9
86. 1d. sage-green ..	0	6	0	3
87. 1 1/4d. blk.-brown ..	0	9	0	2
88. 1 1/4d. chocolate ..	0	9	0	2
89. 1 1/4d. red-brown 1	0	0	0	3
1924: Design as Type 10. No Wmk. Perf. 14. Typo. Sheets of 120.				
90. 1d., sage-green ..	0	6	0	4
91. 1 1/4d., red ..	0	9	0	0



Type 10.

Small Multiple Watermark.

Printed by A. J. Mullett or J. Ash.

1926: Design as Type 10. Wmk. as Type 5. Perf. 14. Typo. Sheets of 120

92. 1/4d. orange ..	0	6	0	6
93. 1d. sage-green ..	0	3	0	1
94. 1 1/4d. red ..	0	6	0	1
95. 2d. chocolate ..	—	1	6	
96. 3d. blue ..	—	0	4	
97. 4d. olive ..	—	1	6	
98. 4 1/4d. violet ..	—	0	8	
99. 1s. 4d. blue ..	—	—	—	

ALTSON'S BUILDING, CORNER COLLINS AND ELIZABETH STREETS, MELBOURNE.

THE KING GEORGE V. SERIES—Continued.



Die 1.  
Ordinary  
(Normal)  
Small Multiple  
Watermark



Die 2.  
Stationery Die  
Small spur at  
right on base  
of tablet



Die I

- 1—Numerals uneven. Curve at lower left very thin.
- 2—Two PENCE. Tall and thin and usually uneven.
- 3—Top of crown heavy and  $\frac{1}{2}$  m.m. above frame line.



Die II.

- 1—Numerals even and broader. All portions thicker.
- 2—Two PENCE. Letters shorter, thick and even.
- 3—Top of crown light,  $\frac{1}{4}$  m.m.

Printed by A. J. Mullett or J. Ash. 1926-29: Design as Type 10. Wmk. as Type 5. Small Multiple. Perf.  $13\frac{1}{2} \times 12\frac{1}{2}$  No. Type. Sheets of 120.

100.	$\frac{1}{2}$ d. orange	0	3	0	2
101.	$\frac{1}{2}$ d. sage-green	0	3	0	1
	Die I.	0	3	0	1
102.	1d. sage-green	2	6	2	0
	Die II.	0	6	0	1
103.	$\frac{1}{2}$ d. scarlet	0	6	0	1
104.	$\frac{1}{2}$ d. red	0	0	0	1
105.	$\frac{1}{2}$ d. red brown	0	0	0	6
106.	2d. chocolate	1	3	0	6
107.	2d. golden scarlet	0	6	0	1
	Die I.	0	6	0	1
108.	2d. golden scarlet	0	6	0	1
	Die II.	0	6	0	1
109.	3d. blue, Die I. thin numerals	—	0	2	
110.	3d. blue, Die II. thick numerals	1	3	0	1
111.	4d. olive	1	9	0	2
112.	$\frac{1}{2}$ d. violet, Die I.	3	0	0	8
112A.	$\frac{1}{2}$ d. violet, Die II.	—	4	0	
113.	$\frac{1}{2}$ d. brown	2	6	0	4
114.	1s. 4d. turquoise	7	6	3	6

1929-30, Officials: Nos. 107 and 111 overprinted as Type 6.

115.	2d. golden scarlet	0	6	0	3
116.	4d. olive	1	6	0	6



Type 12.



Type 13.

1930, Provisionals: Nos. 104 and 112 overprinted as Types 12 and 13.

117.	$\frac{1}{2}$ d. on $\frac{1}{2}$ d., red	0	6	0	2
118.	5d. on $\frac{1}{2}$ d., violet	2	0	1	3

There are four plates nos. (1, 2, 3, 4) in the 2d. on  $\frac{1}{2}$ d. provisional. Prices for these, and Imprints are 3/6 each. All in blocks of 4.

5d. on $\frac{1}{2}$ d. Imprint block of 4	12	0
5d. on $\frac{1}{2}$ d. One with Narrow "E" in Pence. Block of 4	15	0

*K. C. Swanson*  
 15 Tobruk St.,

**WM. ACKLAND, DEALER IN AUSTRALIAN AND FOREIGN STAMPS.**

**KING GEORGE V.—Contd.**

Small Multiple. C. of A. Watermark.  
 Printed by John Ash.

1930-36: Design as Type 10. Wmk.  
 as Type 7. Perf 13½ x 12½. Typo.  
 Sheets of 120. Unused Used

	s.	d.	s.	d.
119. ½d. orange ..	0	3	0	2
120. 1d. green ..	0	3	0	1
121. 1½d. red-brown ..	0	6	0	6
122. 2d. scarlet ..	0	6	0	1
123. 3d. blue ..	0	9	0	1
124. 4d. olive ..	1	0	0	1
125. 5d. brown ..	1	3	0	1
126. 1s. 4d. turquoise	5	0	0	6

**Officials:** Nos. 119, 120, 122, 123 and  
 125 overprinted as Type 6.

127. ½d. orange ..	0	6	0	3
128. 1d. green ..	0	4	0	1
129. 2d. scarlet ..	0	6	0	1
130. 3d. blue ..	1	0	0	9
131. 5d. brown ..	1	3	1	3

**PICTORIALS  
 AIR MAILS—COMMEMORATIVES  
 1927-1937**



Type 14

**Parliament House, Canberra.**

Commemorative of the Opening of  
 Parliament House, Canberra. F.C.T.  
 Design by R. A. Harrison. Dies en-  
 graved by Waterlow & Sons, London.  
 Plates and printing by John Ash,  
 Commonwealth Stamp Printer.

9th May, 1927: Design as Type 14  
 No. wmk. Perf. 11. Recess Sheets of 80  
 Plate Nos. 1 to 12.

132 1½d., brownish lake	0	6	0	2
Variety, flag "half-mast" —	—	—	—	—
Punctured "O S" ..	4	6	2	6
Postmarked "Canberra 9th May" ..	1	0	—	—
Postmarked "Parliament House, 9th May" & punct. "OS" ..	5	6	—	—

**Commemorative Postcard,** with views  
 of the Opening of Parliament and the  
 Military Review, bearing the Canberra  
 stamp and postmark, "9th May" 1 6  
 Imperf. between pair, Pair, £10

**LITHGOW. PICTORIAL, AIR MAIL, etc.**



Type 15

**The Kookaburra**

Commemorative of the International  
 Philatelic Exhibition, Melbourne, 1928,  
 and issued in miniature sheets of four.  
 Designed by R. A. Harrison, Eng. and  
 Printed by J. Ash.

29th October, 1928: Design as Type 15.  
 No wmk. Perf. 11. Sheets of 60  
 (fifteen blocks of four).

The stamp was subsequently issued  
 (on Nov. 2) in usual post office sheets  
 of 120 throughout Australia.

	Unused	Used
	s. d.	s. d.
133. 3d. blue ..	1 6	1 0
Exhibition block of four	7 6	7 6
Single (used at Exhibition) —	1 6	—
Punctured "O S" ..	4 6	2 6



Type 16

**A Pastoral Scene.**

**AIR MAIL STAMP.**

Designed by R. A. Harrison and  
 H. Herbert. Printed by J. Ash.

20th May, 1929: Design as Type 16.  
 No wmk. Perf. 11. Sheets of 80.  
 Plate Nos. 1, 2, 3, 4.

134 3d. green	1	3	0	9
Plate Nos. 1, 2, 3 or 4.—	—	—	—	—
Each per block of four	—	—	—	—
Set of four ..	—	—	—	—
Imprint, block of four	—	—	—	—
Punctured "OS" ..	4	6	—	—

COMMEMORATIVE SERIES, 1929-30.



Type 17.

A Swan, Emblem of Western Australia. Commemorative of the Centenary of the State of Western Australia. Designed by P. Morrison, Eng. and Printed by J. Ash.

28th September, 1929: Design as Type 17. No wmk. Perf. 11. Sheets of 80. Plate Nos. 1 to 12.

135.	1½d. red	..	0	6	0	3
	Plate Nos. 1 to 8	—				
	Each per block of 4		3	0	—	
	Plate No. 9, ditto	..	7	6	—	
	Plate No. 10, ditto	..	3	0	—	
	Plate No. 11, ditto	..	3	0	—	
	Plate No. 12, ditto	..	6	6	—	
	Set of 12, blocks of 4	..	35	0	—	
	Imprint, block of 4	—	—	—	—	
	Punctured "O S"		3	0	2	6



1931, Lord Howe Island.

Provisional Issue.

Sturt Stamp, 2d. on 1½d. red, surcharged in manuscript Illustrated on Page 17.

The Re-entry Variety, Plate 2, Stamp No. 64. "T" of Australia is double and also swan has "double neck."

Variety "Double Neck," as illustrated

	Unused	Used
	s. d.	s. d.
In a block of 4	.. 25 0	—
Variety (Plate 6) "TR" shaded.		
In a block of 4	.. 25 0	—



Type 18

Captain Charles Sturt.

Commemorative of the Centenary of Exploration of the River Murray by Captain Charles Sturt.

Eng. and Printed by John Ash.

2nd June, 1930—Design as Type 18.

No wmk. Perf. 11. Sheets of 120.

Plate Nos. (1½d.) 1 to 8; (3d.) 1, 2.

136. 1½d. red .. 0 6 0 3

137. 3d. blue.. .. 2 0 1 3

1½d., Plate Nos. 2 to 7.

Each per block of 4 3 6 —

1½d. Plate Nos. 1 & 8.

Each per block of 4 3 0 —

3d. Plate Nos. 1 or 2.

Each per block of 4 9 0 —

1½d. Imp., block of 4 3 0 —

3d. Imp., block of 4 9 0 —

1½d., punctured "O.S." 3 6 2 0

3d., punctured "O.S." — 4 0



*H. C. Swanston*

WM. ACKLAND, DEALER IN AUSTRALIAN AND FOREIGN STAMPS  
15 Tobruk St.,

**Littleton,  
COMMEMORATIVE SERIES, etc., 1931-32.  
LITHGOW**



Type 19

The "Southern Cross" above the hemispheres.



Type 20.

Legend—"Air Mail Service" at sides.  
Commemorative of the flights of  
Kingsford Smith.

Eng. and Printed by John Ash.

19th March, 1931.—Design as Type 19  
2d. and 3d. values), and as Type 20  
(6d.). No wmk. Perf. 11. Recess.  
Sheets of 80, 2d.—1 to 8; 3d., 1 to 3  
and 6d., 1.

138.	2d. red	0	8	0	2
139.	3d. blue	1	6	1	0

**Air Mail.**

140.	6d. violet	2	6	2	6
2d. Plate Nos. 1 to 8.					
	Each per block of 4	3	6	—	
3d. Plate Nos. 1, 2, 3,					
	Each per block of 4	9	0	—	
	2d. Imp., block of 4	3	6	—	
	3d. Imp., block of 4	9	0	—	
	6d. Imp., block of 4	15	0	—	
	3d. Plane, dropping bomb (pl. 3)	—	—	—	
	6d. variety. Re-entry "LD" double	25	0	25	0
	2d., 3d., 6d., Flown from Melbourne to Sydney by Sir Charles Kingsford Smith on 19th March, 1931	..	8	6	

Officials—Nos. 138 and 139 overprinted  
O.S. as Type 6.

			Unused.		Used.	
			s.	d.	s.	d.
141.	2d. red	..	9	6	4	0
142.	3d. blue	..	22	6	10	0



Type 21

The "Southern Cross" above the  
Hemispheres.

**AIR MAIL STAMP.**

Eng. and Printed by J. Ash.

4th November, 1931—Designed as Type  
21. No wmk. Perf. 11. Recess. Sheets  
of 40. No plate Nos.

143.	6d. light brown	2	6	2	6
144.	6d. deep brown	2	0	2	0
143.	Imp. strip of 3	12	6	12	6
144.	Imp. strip of 3	10	6	10	6

Official: No. 143 overprinted O.S.  
as Type 6.

145.	6d. light brown	2	6	2	6
------	-----------------	---	---	---	---



Type 22.

The Lyre Bird.

Pictorial:

Eng. and Printed by John Ash.

15th February, 1932: Design as Type  
22. No wmk. Perf. 11. Recess.  
Sheets of 120.

146.	1s. green	..	2	6	0	2
	Imp., block of 4	..	15	0	—	

Official: No. 146 overprinted O.S.  
as Type 6.

147.	1s. green	..	4	0	3	6
------	-----------	----	---	---	---	---

ALTSON'S BUILDING, CORNER COLLINS AND ELIZABETH-  
STREETS, MELBOURNE

COMMEMORATIVE SERIES, etc., 1932-34.



Type 23

Sydney Harbour Bridge

Commemorative of the Opening of the Bridge Across Sydney Harbour.

Eng. and Printed by John Ash.

14th March, 1932—Design as Type 23. Wmk. as Type 7. Perf.  $10\frac{1}{2}$  x 11. Typo. Sheets of 88.

No.		Unused		Used	
		s.	d.	s.	d.
148.	2d. scarlet	0	6	0	1
	Imp., block of 4	3	0	—	—

14th March, 1932—Design, as Type 23. No wmk. Perf. 11. Recess. Sheets of 80 (2d. and 3d.) and 20 (5/-).

149.	2d. scarlet	0	6	0	2
150.	3d. blue	1	3	0	0
151.	5s. blue-green	—	—	50	0

2d., Plate Nos. 1, 2, 3, 4  
Each per block of 4

3d., Plate Nos. 1, 2, 3, 4  
Each per block of 4

2d., Imp., block of 4

3d., ditto

5s., ditto., strip of 3

Officials: Nos. 149 and 150 Overprinted O.S. as Type 6.

152.	2d. scarlet	0	9	0	6
153.	3d. blue	2	0	2	0

2d., Plate Nos. 1, 2, 3, 4  
Each per block of 4

3d., Plate Nos. 1, 2, 3, 4  
Each per block of 4

Officials:

2d., Imp., block of 4

3d., ditto



Type 24

The Kookaburra.

Pictorial.

Eng. and Printed by J. Ash.

1st June, 1932—Design as Type 24. Wmk. as Type 7. Perf.  $13\frac{1}{2}$  x  $12\frac{1}{2}$ .

Typo. Sheets of 120.

154.	6d. red-brown	1	3	0	2
	Imp., block of 4	8	0	—	—



Type 25

An aborigine of the Yarra Tribe and a modern view of Melbourne across the Yarra River.

Commemorative of the Centenary of the State of Victoria.

Eng. and Printed by J. Ash

2nd July, 1934: Design as Type 25. Wmk. as Type 7. Perf.  $10\frac{1}{2}$  and  $11\frac{1}{2}$ .

Recess. Sheets of 80.

No.		Perf. $10\frac{1}{2}$		Perf. $11\frac{1}{2}$	
		s.	d.	s.	d.
155.	2d. vermilion	0	6	0	1
156.	3d. blue	1	0	0	6
157.	1s. black	4	6	2	6

158. 2d. vermilion

159. 3d. blue

160. 1s. black

Perf.  $10\frac{1}{2}$

2d., Imp., block of 4

3d., ditto

1s., ditto

2d., First day of issue

cover

Perf.  $11\frac{1}{2}$

2d., Imp. block of 4

3d., ditto

1s., ditto

Littleton,

LITCOMMEMORATIVE SERIES, etc., 1934-35.



Type 26

**A Merino Sheep**

Commemorative of the Centenary of the Death of Captain John Macarthur, founder of the Australian wool industry.

Eng. and Printed by J. Ash

1st November, 1934: Design as Type 26.

Wmk. as Type 7. Perf. 11½. Recess.

Sheets of 80. Unused Used

No. s. d. s. d.

161. 2d. red .. 0 6 0 1

161A. 2d., Hill with dark shading .. 2 0 0 6

162. 3d. blue .. 1 6 0 9

163. 9d. violet .. 7 6 7 0

2d., Imp., block of 4 3 0 —

3d., ditto .. 9 0 —

9d., ditto .. — — —

161A. ditto .. 12 6 —



Type 27

**Hermes and Two Hemispheres.**

Pictorial—Although not officially described as an airmail stamp this emission was specially issued to prepay the combined airmail and postage charges of an ordinary airmail letter to London from Australia.

Eng. and Printed by J. Ash.

1st December, 1934: Design as Type 27.

No wmk. Perf. 11. Recess. Sheets

of 80. Chalk-surfaced paper.

164. 1s. 6d. claret .. 4 0 0 6

Imp., block of 4 .. 24 0 —



Type 28

**The Cenotaph, Whitehall.**

Commemorative of the 20th Anniversary of the Landing of the Anzacs in Gallipoli.

Eng. and Printed by J. Ash.

18th March, 1935: Design as Type 28.

Wmk. as Type 7. Perf. 13½ x 12½ (2d.)

and 11 (1s.). Recess. Sheets of 96

(2d.) and 120 (1s.). Plate Nos.:

2d.—1, 2, 3; 1s.—1, 2.

165. 2d. red .. 0 6 0 1

166. 1s. black .. 7 6 7 0

2d., Plate Nos. (found

in four different positions)—

Each 1, 2, or 3 Either

position .. 3 0 —

Complete set of 12 .. 32 0 —

Imp., block of 4 .. 3 0 —

2d., First day cover .. — 0 9

1s., Plate Nos. 1 or 2

Blocks of 4 each .. — —

Imp., block of 4 .. — —



Type 29 King George V. on His Charger "Anzac."

Commemorative of the Silver

Jubilee of King George V.

Eng. and Printed by J. Ash

COMMEMORATIVE SERIES, 1935-36.

2nd May, 1935: Design as Type 29. Wmk. as Type 7 (sideways). Perf.  $11\frac{1}{2}$  Recess. Sheets of 80. Chalk-surfaced paper. Plate Nos. 2d., 1 to 6; 3d., 1; 2s., 1.

SILVER JUBILEE.

No.		s.	d.	s.	d.
167.	2d. scarlet	..	0 6	0 1	
168.	3d. blue	..	1 3	1 0	
169.	2s. violet	..	9 0	8 6	

2d. Plate Nos. (1 to 6)	each exist in 4 different positions).				
Each Plate No., block of 4	..	3 0	—		
Complete set of 24 Plate Nos. in all positions	65 0	—			
Imp., block of 4	..	3 0	—		
2d., First day cover	..	—	0 9		
3d., Plate No. 1 (either of four positions)—					
Block of 4	..	7 6	—		
Complete set of 4 positions	..	28 6	—		
Imp., block of 4	..	7 6	—		
2s., plate No. 1 (either of two positions), block of 4	..	50 0	—		
Imp., block of 4	..	50 0	—		



Type 30.

Amphitrite and Telephone Cable.

Commemorative of the Opening of the Submarine Telephone Cable between Tasmania and the Mainland.

Eng. and Printed by J. Ash.

1st April, 1936: Design as Type 30. Wmk. as Type 7. Perf.  $11\frac{1}{2}$ . Recess. Sheets of 80. Plate Nos. 2d., 1 to 4; 3d., 1.

170.	2d. scarlet	..	0 6	0 1
171.	3d. blue	..	0 9	0 6
2d., Plate Nos. (1 to 4) each exist in four different positions.				

	Unused	Used
	s. d.	s. d.
Each block of 4	.. 3 0	—
Complete set of 16 Plate Nos. in all positions	45 0	—
Imp., block of 4	.. 3 0	—
3d., block of 4, Plate No. 1 (either of 4 positions)	4 6	—
Set of 4 positions	.. 17 0	—
Imp., block of 4	.. 4 6	—



Type 31.

Depicts:

- The Old Gum Tree, Glenelg.
- The First Site of Adelaide.
- King William Street in 1936.

Commemorative of the Centenary of the State of South Australia.

Eng. and Printed by J. Ash.

3rd August, 1936.—Design as Type 31.

Wmk. as Type 7. Perf.  $11\frac{1}{2}$ . Recess. Sheets of 80. No Plate Nos.

172.	2d. carmine	..	0 6	0 1
173.	3d. blue	..	0 9	0 6
174.	1s. green	..	3 6	1 6
2d., Imp., block of 4	3 0	—		
2d., first day cover	..	—	1 0	
3d., Imp., block of 4	4 6	—		
3d., first day cover	..	—	1 6	
1s., Imp., block of 4	21 0	—		
Full Set, first day cover	—	5 6		

15 Tobruk St.,

Littleton, COMMEMORATIVE SERIES, 1937.

LITHGOW



Type 32.

Captain Philip and his party on the shores of Sydney Cove. Commemorative of the 150th Anniversary of the First Settlement in Australia.

Eng. and Printed by J. Ash.

1st October, 1937: Design as Type 32.

Wmk. as Type 7. Perf.  $13\frac{1}{2} \times 14$ .

Recess. Sheets of 80.

No		Unused		Used	
		s. d.	s. d.	s. d.	
175	2d., red	0	4	0	1
175A	2d., man with tail	—	—	10	0
176	3d., blue	0	9	0	6
177	9d., violet	2	6	2	6
	2d., Imp., block of 4	2	6	—	—
	3d., Imp., block of 4	4	6	—	—
	9d., Imp., block of 4	15	0	—	—
	2d. & 3d., First day cover	—	—	2	6
	Full Set, first day cover	—	—	6	0



Type 33.

A.I.F. Issue. 15th July, 1940.

Eng. and Printed by W. C. G. McCracken

Wmk "C of A." Type 7. Perf.  $13\frac{1}{2} \times 13\frac{1}{2}$  Recess.

	s. d.	s. d.
178	1d., green	0 3
179	2d., red	0 6
180	3d., blue	1 6
181	6d., pur.-brown	3 0
	1d. Imp., block of 4	2 6
	2d. " " "	3 6
	3d., Imp., block of 4	10 0
	6d. " " "	30 0



Type 33A.

Duke and Duchess of Gloucester,

19th February, 1945.

Engraved and Printed by W. G. C. McCracken.

Wmk. "C of A." Type 7.

Perf.  $14\frac{1}{2} \times 14\frac{1}{2}$  Recess.

	s. d.	s. d.
182	2 $\frac{1}{2}$ d., red	0 4
183	3 $\frac{1}{2}$ d., blue	0 6
184	5 $\frac{1}{2}$ d., blue-black	0 9
	2 $\frac{1}{2}$ d., Imp. block of 4	2 0
	3 $\frac{1}{2}$ d., " " "	3 0
	5 $\frac{1}{2}$ d., " " "	4 6

Prices subject to change without notice.

DEFINITE SERIES OF 1937-1938.

Reign of King George VI.



Type 34  
The Kangaroo  
3rd Oct., 1938



Type 35  
Queen Elizabeth  
10th May, 1937.



Type 36  
King George VI.  
10th May, 1937



Type 37  
King George VI..  
3rd Aug., 1937



Type 38  
The Koala  
1st Feb., 1938.



Type 39  
Merino Sheep  
1st Dec., 1938



Type 40  
The Kookaburra  
3rd Aug., 1937



Type 41  
The Platypus  
1st Sept., 1938



Type 42  
The Lyrebird  
3rd Aug., 1937

DEFINITE SERIES, 1937-38. REIGN OF KING GEORGE VI.



Type 43  
Queen Elizabeth  
1st April, 1938



Type 44  
King George 6th  
1st April, 1938

*H. C. Swanson*  
15 Tobruk St.,  
Littleton,  
LITHGOW.



Type 45  
King and Queen  
Issued 1st October, 1938.

Eng. and Printed by John Ash.

1937-38: Types Nos. 34 to 45. Wmk. as Type 7. Perf.  $13\frac{1}{2}$  x 14. Recess. Sheets of 160 (80 for the 1/6d.).

No.		Unused		Used	
		s. d.	s. d.	s. d.	s. d.
200.	½d. orange ..	0	2	0	1
201.	½d. green ..	0	3	0	1
202.	1½d. red-brown ..	0	6	0	6
203.	2d. red ..	0	6	0	1
204.	3d. pale blue ..				
	(1st printing)	4	6	5	0
205.	3d. blue ..				
	(2nd printing.)	1	6	0	4
206.	3d. dark blue, ..				
	(3rd printing)	—	0	2	

		Unused		Used	
		s. d.	s. d.	s. d.	s. d.
207.	4d. green ..	1	0	0	2
208.	5d. purple ..	0	6	0	1
209.	6d. red-brown ..	1	6	0	2
210.	9d. chocolate ..	2	3	0	3
211.	1/- green ..	3	0	0	2
212.	1/4 magenta ..	1	6	0	9
213.	1/6 claret, Globe, ..	1	9	0	3
	as Type 27 ..				
	(Perf. $13\frac{1}{2}$ )				
214.	5/- type 43 ..	5	6	1	0
215.	10/- King ..	11	0	6	0
216.	£1 King & Queen ..	22	0	12	0
217.	10/-, second-class ..				
	copies.. Used	2	0	0	4

Nos. 214 and 215 are perf.  $13\frac{1}{2}$  x  $13\frac{1}{2}$ ; No. 216 perf.  $13\frac{1}{2}$  x  $13\frac{1}{2}$ .

1937-42. DEFINITE SERIES, KING GEORGE VI.



1st Printing

White Leaves.

Stamp No. 204.



2nd Printing

Coloured Leaves.

Stamp No. 205.

Eng. and Printed by John Ash.  
or W. C. G. McCracken (1940-42),  
1938-42: Designs as before,  
but re-engraved slightly smaller.  
Perf.  $14\frac{1}{2} \times 14$ . Wmk. as Type 7.  
Sheets of 160.

	Unused		Used	
	s.	d.	s.	d.
218 1/4d. orange ..	0	1	0	1
219 1/4d. green, larger lettering ..	0	3	0	1
220 1/4d. red-brown	1	0	1	0
221 1/2d. red, larger lettering ..	0	6	0	1
222 3/4d. dark-blue (4th printing) ..	—	—	0	1
223 4d., green ..	0	5	0	1
224 6d., red-brown	0	7	0	1
225 9d., chocolate ..	1	0	0	2
226 1/-, green ..	1	2	0	1

The above stamps were issued in  
order to save paper.

Provisional Issue.



Types 46

1941, Surcharged Stamps, necessitated by increased postal rates.

228 2 1/4d. on 2d. ..	0	9	0	2
(No. 221)				
229 3 1/4d. on 3d. ..	0	9	0	6
(No. 222)				
230 5 1/4d. on 5d. ..	1	6	1	0
(No. 208)				
2 1/4d. Imp. Blk. of 4 ..	6	0	—	—
3 1/4d., .. ..	6	0	—	—
5 1/4d., .. ..	10	0	—	—



1941-44. REIGN OF KING GEORGE VI.



Type 47



Type 48



Type 49



Type 50

Eng. and Printed by W. C. G. McCracken.

1941. New Designs and changes of colour.

Perf.  $14\frac{1}{2} \times 14$ . Recess. Wmk. "C. of A." Type 7. Sheets of 100.

	Unused	Used
231 1d., red-brown	0 2	0 1
232 1 1/2d., green	0 3	0 1
233 2d., violet	0 3	0 1
234 2 1/2d., scarlet	0 3	0 1
235 3d. black-brown	0 4	0 1
236 3 1/2d., deep blue	0 5	0 1
237 5 1/2d., indigo	0 7	0 1

1st December, 1942.

1942-3. New Designs.

238 1d., red-brown, Queen	.. 0 1 1/2	0 1
239 1 1/2d., green, Queen	.. 0 2	0 1

4th December, 1944

Engraved and printed by W. C. G. McCracken,

240 2d. violet	.. 0 3	0 1
----------------	--------	-----



Particulars of Lord Howe Island Stamp see page 8.

## AUSTRALIAN COMMONWEALTH.

Continued.



### VARIETIES.

INVERTED WMKS.			INVERTED WMKS.		
	Unused.	Used.	King—	Unused.	Used.
<b>Kangaroo—</b>	s. d.	s. d.	½d., green, Cr.A. ..	1 6	1 6
½d., 1st wmk. ..	3 0	2 6	½d., „ mult. ..	2 6	1 6
1d., „ ..	—	0 6	½d., orange, Cr.A. ..	0 6	0 6
2d., „ ..	7 0	3 0	1d., red, Cr.A. ..	2 0	0 6
3d., „ ..	—	2 6	1d., green, Cr.A. ..	2 6	1 6
1/- „ ..	—	6 0	1½d., black, Cr.A. ..	2 0	1 0
2d., 3rd wmk. ..	4 0	2 0	1½d., „ mult. ..	2 0	2 0
3d., „ ..	10 0	4 0	1½d., chocolate, Cr.A. ..	2 6	1 6
6d., „ ..	12 6	3 6	4d., orange ..	6 0	2 6
9d., „ ..	12 6	—	4d., lemon ..	8 0	3 6
1/- „ ..	12 6	6 0	4d., blue ..	—	3 6
			1d., small mult. ..	1 0	1 0
			1½d., „ „ ..	0 9	0 9
			2d., „ „ ..	1 0	1 0
			2d., „ C.ofA.wmk. ..	0 9	0 3

### VARIETIES.—KANGAROO.

1d., wmk. sideways ..	25/- each	6d., brown, broken leg ..	—
*1/-, watermark sideways	15/- each (Used, 15/-).		

### VARIETIES.—KING GEORGE (Unused except otherwise stated).

½d., thin, 1 in ½ ..	10/- each	1d., green, no wmk., "RA" ..	
½d., with white dot ..	5/6 „	joined ..	5/- each
1d., red, very thin paper ..	1/- „	1d., red, Secret mark (used)	9d. each
1d., red, thick ppr. (Used 1/-)	1/- „	1d., green, Secret mark ..	4/- „
1d., red, Die 2, Stationery, Used	1/- „	1d., green, „ no wmk. ..	5/- „
1d., red, Die 3, War Saving ..	1/- „	1d., green „ s. mult. ..	4/- „
1d., red, "RA" joined ..	6/- pair	1½d., black, "HAIF" ..	4/6 „
1d., lilac, "RA" joined ..	6/- „	1½d., chocolate, "HAIF" ..	4/6 „
1d., green, wmk. Cr.A.,		1½d., very thin paper ..	2/6 each
"RA" joined ..	4/- each	1½d., red, "HALE" ..	4/6 pair
1d., green, multiple wmk.,		1½d., retouch, thin "ALI" ..	4/6 each
"RA" joined ..	5/- each	4½d., violet, Die 2 ..	Used, 4/- each

### VARIETIES—KING GEORGE (Used).

"Four Pence" in thinner letters—4d. lilac, 30/- each; 4d. blue, 20/- each.

**IN STOCK.**—Several items of Commonwealth Stamps with margin paper attached, showing imprint of "J. B. Cooke," and others of "Harrison," "Mullett," and "Ash" Government Stamp Printers.

VARIETIES OF THE KING GEORGE V. SERIES.



Thin "1" in fraction at right.



White dot before "2."

*H. C. Swanson*  
 15 Tobruk St.,  
 Littleton,  
 LITHGOW.



Die 3.  
 War Savings Paper.  
 Vertical lines on neck  
 are cut across near  
 base.



"RA" joined.



Secret mark (break in lower frame)



"HAIF" Pence.



"HALE" Pence.



Left Stamp normal ; right Stamp thinner "Four Pence."  
 Prices of all above Varieties are quoted on the preceding page.

1937-44. REIGN OF KING GEORGE VI.

IMPRINTS. Blocks of Four, Unused.

No.		Price
200	½d. orange, John Ash .. .. .	1 6
218	½d. orange, W. C. G. McCracken .. .. .	2 0
218	½d. orange, "By Authority" .. .. .	0 9
201	1d. green, die I, John Ash .. .. .	2 6
219	1d. green, die II, John Ash .. .. .	1 9
202	1½d. red-brown, John Ash .. .. .	4 0
220	1½d. red-brown, W. C. G. McCracken .. .. .	50 0
203	2d. red, die I, John Ash .. .. .	2 9
221	2d. red, die II, John Ash .. .. .	3 0
204	3d. pale blue (1st print), John Ash .. .. .	27 6
205	3d. blue (2nd print), John Ash .. .. .	9 0
206	3d. dark blue (3rd print), John Ash .. .. .	8 0
222	3d. dark blue (4th print), John Ash .. .. .	7 6
207	4d. green, John Ash .. .. .	6 0
223	4d. green (By Authority) .. .. .	2 0
208	5d. purple, John Ash .. .. .	3 0
208	5d. purple, W. C. G. McCracken .. .. .	5 0
209	6d. red-brown, John Ash .. .. .	9 0
224	6d. red-brown, W. C. G. McCracken .. .. .	3 6
210	9d. chocolate, John Ash .. .. .	12 6
225	9d. chocolate, By Authority .. .. .	5 0
211	1/- green, John Ash .. .. .	18 0
226	1/- green, John Ash .. .. .	6 6
212	1/4 magenta, John Ash .. .. .	7 6
213	1/6 claret, John Ash .. .. .	15 0
213	1/6 claret, W. C. G. McCracken .. .. .	10 0
214	5/- lake, John Ash .. .. .	30 0
215	10/- purple, John Ash .. .. .	60 0
216	20/- blue, John Ash .. .. .	120 0

1941-42—CHANGES OF COLOURS AND NEW DESIGNS

231	1d. red-brown, John Ash .. .. .	2 0
232	1½d. green, W. C. G. McCracken .. .. .	3 0
232	1½d. green, By Authority .. .. .	3 6
233	2d. violet, John Ash .. .. .	2 0
234	2½d. scarlet, By Authority .. .. .	1 3
235	3d. black-brown, John Ash .. .. .	3 0
235	3d. black-brown, By Authority .. .. .	1 6
236	3½d. deep blue, By Authority .. .. .	1 9
237	5½d. indigo, By Authority .. .. .	2 6

1942-44—NEW DESIGNS

238	1d. red-brown, By Authority .. .. .	0 6
239	1½d. green, By Authority .. .. .	0 9
240	2d. violet, By Authority .. .. .	1 0

VARIETIES, 1914-24, King George 5th, 1d. red, Type 10, Used. Price, 1/- each  
 "RA" joined; Ferns; Half Moon; Wattle Line; Secret Mark; Roo's tongue  
 out; Run "N"; Dot before "1"; Thin "One penny"; Corner Dot; Line under  
 tablet; Emu saddle. "Penavy," price 2/6; "Penavy," rough paper, price 2/6;  
 Retouched Corner, price 2/6. Thin "G," price 7/6; Substituted Cliche (no top  
 to crown), rough paper, price 7/6; the same, but smooth paper, 15/-.

SHADES, Used

Pink 3/-; Rose red 3/-; Carmine (aniline) 1/6.

Rough Papers

Scarlet 1/6; Deep red 6d.; Rose red 6d.; Die 2, 1/6; Rosine 3/6.

AIRMAIL SECTION.



Gullaux.  
Basil Watson.

*H. C. Swanston*  
15 Tobruk St.,  
Littleton,  
LITHGOW.

A large variety of Flown  
Covers in Stock.

The following List is  
Representative Only.



Ross-Smith.

AIR MAIL STAMPS.

ENTIRE FLOWN COVERS.

First Flights.

- 1914, Monsieur-Gullaux, Melbourne to Sydney. Post-card, £6.  
 1917, Basil Watson, Mount Gambier, Hamilton, Warrnambool and Casterton to Melbourne. Post-card, £6.  
 1919-20, Ross-Smith, London to Australia. Entire Envelope, with stamp. £70.  
 Second-class Specimens. £25 to £30.  
 Ross-Smith Stamp, used, but not on envelope, £42.  
 Ross-Smith Stamp, unused, with full marginal paper all round stamp, only a few known to exist "Unused." Price, £100.

East-West Service —Australian Airways.

First Flights, June 2nd and June 4th, 1929. Flown Covers.

Franked with Air-mail Stamps, etc.

Perth to Adelaide, ordinary letter	.. .. .	2/6 cover
Adelaide to Perth, ordinary letter	.. .. .	1/6 ..
Perth to Adelaide, registered letter	.. .. .	3/6 ..
Adelaide to Perth, registered letter	.. .. .	3/6 ..
Ceduna to Perth; Kalgoorlie to Perth; Perth to Forrest; Adelaide to Forrest; Ceduna to Adelaide; Kalgoorlie to Adelaide, registered letter	.. .. .	10/- ..
Broome to Perth, and 1st Flight Perth to Adelaide (2 flights), registered	.. .. .	5/- ..
Adelaide to Perth, 1st Flight; and Perth to Broome, or to Geraldton, Caranarvon, Port Headland, Whim Creek, Derby or Roeburne. All 2 flights, registered	.. .. .	5/- ..

NOTE.—The registered letters have the date stamp of arrival, postmarked on the backs of the envelopes.

## AUSTRALIAN COMMONWEALTH.

### AUSTRALIAN AIR MAILS—First Flight Flown Covers.

Franked with Air Mail Stamps, etc.

	Ordinary	Registered
Sydney to Brisbane, 31st December, 1929 .. ..	2/6	5/-
Brisbane to Sydney, 31st December, 1929 .. ..	2/6	5/-
Brisbane to Townsville, 29th March, 1930 .. ..	4/6	5/6
Brisbane to Rockhampton or Mackay, 29th March, 1930 .. ..	—	7/6
Townsville to Brisbane, 29th March, 1930 .. ..	4/6	5/6
Melbourne to Sydney, 1st June, 1930 .. ..	3/-	5/-
Sydney to Melbourne, 1st June, 1930 .. ..	3/-	5/-
Derby to Wyndham (W. Aust.), 11th July, 1930 .. ..	—	5/-

### First Flight between the Mainland and Tasmania Flown Covers with Official Cachet.

Hobart to Melbourne, 1st May, 1931 .. ..	2/6	4/6
Launceston to Melbourne, 1st May, 1931 .. ..	2/6	4/6
Melbourne to Hobart, 2nd May, 1931 .. ..	2/6	4/6
Melbourne to Launceston, 2nd May, 1931 .. ..	2/6	4/6

### First Flight from Brisbane, 7th May, 1931.

By the "coastal" route, to either of the following Queensland towns:—  
Ayr, Bowen, Bundaberg, Gladstone, Mackay, Maryborough or Rockhampton.

PRICE .. 5/- 7/6

### First Flight, Lord Howe Island to Australia, 6th June, 1931.

Flown Cover, autographed, £6 (40 exist).

1931



Price, —

### OVERSEAS AIRMAILS—First Flights.

	Ordinary	Registered
London to Australia, 4th April, 1931 .. ..	6/6	—
Melbourne to London, 23rd April, 1931 .. ..	—	12/6
Batavia to Australia, 11th May, 1931 .. ..	—	15/-
Melbourne to Batavia, 22nd May, 1931 .. ..	—	12/6
Melbourne to London, via Batavia and Amsterdam, 22nd May, 1931 .. ..	—	12/6

*H. C. Swanston*

15 Tobruk St.,  
Littleton,

WM. ACKLAND, DEALER IN AUSTRALIAN AND FOREIGN STAMPS.

**AUSTRALIAN COMMONWEALTH.**

POSTAGE DUES.



(White Space)



Type 50



Type 51

Printed at Government Printing Office  
Sydney.

1902: Design as Type 50. Wmk. as  
Type 51 (Crown N.S.W.). Perf.  $11\frac{1}{2}$ , 12  
Typo.

D.		Unused		Used	
		s.	d.	s.	d.
1.	$\frac{1}{2}$ d. emerald-green	0	6	0	6
2.	1d. " "	0	6	0	6
3.	2d. " " "	0	9	0	6
4.	3d. " " "	1	0	1	0
5.	4d. " " "	1	3	0	9
6.	6d. " " "	1	6	0	9
7.	8d. " " "	3	6	3	0
8.	5/- " " "	9	6	5	6



(Space Filled)

Type 52

1902-04: Design as Type 52. Wmk. as  
Type 51. Perf.  $11\frac{1}{2}$ , 12;  $11\frac{1}{2}$ , 12 x 11;  
and 11. Typo.

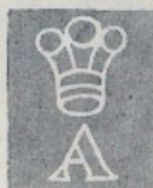
D		s.	d.	s.	d.
9.	$\frac{1}{2}$ d. emerald-green	0	8	0	4
10.	1d. " "	0	6	0	2
11.	2d. " " "	0	8	0	3
12.	3d. " " "	1	6	0	6
13.	4d. " " "	2	0	0	6
14.	5d. " " "	1	0	0	9
15.	6d. " " "	1	6	0	9
16.	8d. " " "	2	6	1	3
17.	10d. " " "	2	6	1	3
18.	1/- " " "	2	0	0	6
19.	2/- " " "	4	0	1	3
20.	5/- " " "	12	0	1	6



Type 53.

1906-08: Design as Type 52. Wmk.  
as Type 53. Perf.  $11\frac{1}{2}$ , 12 x 11; and  
Perf. 11. Typo.

D		s.	d.	s.	d.
21.	$\frac{1}{2}$ d. emerald-green	0	6	0	6
22.	1d. " "	0	6	0	2
23.	2d. " " "	0	9	0	3
24.	3d. " " "	1	6	0	8
25.	4d. " " "	2	0	0	4
26.	6d. " " "	2	0	0	4



Type 54.

ALTSON'S BUILDING, CORNER COLLINS AND ELIZABETH  
STREETS, MELBOURNE.

POSTAGE DUES.—Continued.

(Space Filled).

Watermarked Crown and double-lined A.

1907: Design as Type 52. Wmk. as Type 54. Perf. 11½, 12. Typo.

D		s. d.	s. d.
27.	½d. emerald-green	0 8	0 4
28.	1d. " "	1 0	0 4
29.	2d. " "	2 0	1 0
30.	4d. " "	3 0	2 0
31.	6d. " "	3 6	2 0



Type 55.

Watermarked Crown and Single-lined A.

1908-09: Design as Type 55. Wmk. as Type 53. Perf. 11½, 12 or 11. Typo.

D		s. d.	s. d.
31½.	1/- emerald-green	3 0	1 3
32.	2/- " "	35 0	35 0
33.	5/- " "	12 0	2 9
34.	10/- " "	£5	£5
35.	20/- " "	£9	£9



Type 56

Watermarked Crown and Double-lined A.

Printed by J. B. Cooke, at Melbourne.

1909: Design as Type 56. Wmk. as Type 54. Perf. 12 x 12½, or 12½. Typo.

D		s. d.	s. d.
36.	½d. rosine and green	0 3	0 2
37.	1d. " "	0 4	0 1
38.	2d. " "	0 6	0 1
39.	3d. " "	0 8	0 3
40.	4d. " "	0 8	0 3
41.	6d. " "	1 0	0 4
42.	1/- " "	2 0	0 3
43.	2/- " "	4 0	0 9
44.	5/- " "	9 0	1 6
45.	10/- " "	20 0	—
46.	£1 " "	40 0	—

1912-18: Design as Type 56. Thin Paper. Wmk. Type 54. Perf. 11. Typo

47	½d., rosine and green	0 9	0 4
48	1d., " "	0 3	0 3

1918-21: Design as Type 56. Thin Paper. Wmk. Type 54. Perf. 14. Typo.

49.	½d. carmine & green	3	0 2
50.	1d. " "	4	0 2
51.	2d. " "	8	0 3
52.	3d. " "	1 0	0 6
53.	4d. " "	1 0	0 8

Printed at Melbourne by T. S. Harrison, A. J. Mullett and J. Ash.

1918-30: Design as Type 56. Wmk. as Type 4. Perf. 14. Typo.

D		s. d.	s. d.
54.	½d. rosine & green	0 1	0 1
55.	1d. " "	0 2	0 1
56	1½d. " "	0 6	0 4
57.	2d. " "	0 4	0 1
58.	3d. " "	0 8	0 3
59.	4d. " "	0 8	0 2
60.	4d. do. (perf. 11)	0 9	0 3
61.	6d. " "	1 3	0 6

1931-36: Design as Type 56. Wmk. as Type 7. Perf. 14 or Perf. 11. Typo.

62.	1d. rosine & green	0 3	0 2
63.	2d. " "	0 6	0 2
Perf. 11.			
64.	½d. rosine & green	0 2	0 1
65.	1d. " "	0 3	0 1
66.	2d. " "	0 6	0 1
66A.	3d. " "	1 0	0 4
67.	4d. " "	0 9	0 2
68.	6d. " "	—	1 6
69.	1/- " "	2 0	1 6



*H. C. Swanson*  
**15 Tobruk St.,**  
**Littleton,**  
**LITHGOW.**

POSTAGE DUES—Continued.



Type 57.

1983—Similar to Type 56, but design modified. Frames line-engraved and centres electrolytied. Wmk. C. of A. Perf.  $14\frac{1}{2} \times 13\frac{1}{2}$ .

D.	s.	d.	s.	d.	D.	s.	d.	s.	d.
70.	$\frac{1}{2}$ d.,	scarlet & grn.	0	1	74.	4d.,	scarlet & grn.	0	6
71.	1d.	"	0	2	75.	6d.	"	0	8
72.	2d.	"	0	3	76.	1/-	"	1	3
73.	3d.	"	0	5					

SETS OF AUSTRALIAN COMMONWEALTH.

Set No.	*Signifies Unused.	No. of Stamps.	s.	d.
<b>Australian Commonwealth—</b>				
1600	1913-38, Kangaroo; $\frac{1}{2}$ d. to 2/-	11	3	6
1602	" " 5/-	1	0	0
1603	" " 10/-	1	—	—
1604	" " £1	1	—	—
1605	" " £2	1	—	—
1606	1913-4, King, 1d., Kookaburra, 6d.	2	8	3
1607	1914-34, " $\frac{1}{2}$ d., 1d., 1 $\frac{1}{2}$ d., 4d., 5d., 1/4	20	4	9
1608*	1918, " 1d., Multiple Wmk.	2	13	3
1608A	1927-40 Commemoratives, Pictorials	30	4	0
1609	1913, Kangaroo, O.S., Large, $\frac{1}{2}$ d. to 1/	6	4	0
1611	" " O.S., " 2/- & 5/-	2	—	—
1612	" " O.S., " 10/- to £2	3	—	—
1613	1913-20 " O.S., Small, $\frac{1}{2}$ d. to 1/-	7	2	0
1614	" " O.S., " 2 $\frac{1}{2}$ d., 5d.	2	4	0
1615	" " O.S., " 2/- & 5/-	2	—	—
1616	" " O.S., " 10/- & £1	2	—	—
1617	1914-30, King, O.S., $\frac{1}{2}$ d. to 5d.	11	1	6
1618	1902, Postage Due, White Space, $\frac{1}{2}$ d., 1d., 2d., 3d., 4d., 6d.,	6	3	6
1619	1902 " Space Filled, $\frac{1}{2}$ d. to 6d.	7	3	3
1620	" " " 10d., 1/-, 2/-, 5/-	4	4	6
1621	" " " Stroke After Value, Used	2	4	0
1622	1909-13 " Rose and Green, $\frac{1}{2}$ d. to 5/-	9	3	6
1623	" " " " 10/-	1	—	—
1624	" " " " £1	1	—	—



**AUSTRALIAN COMMONWEALTH  
STAMPS, Overprinted for use in  
NEW GUINEA  
N.W. Pacific Islands.**



The setting of the overprint consists of a block of 30 (6 x 5), and shows three varieties caused by the use of the two different types of "S" which occur in this fount of type—(a) both "SS" normal; (b) first "S" with small head and large tail and second "S" normal; (c) both "S S" with small head and large tail.

**All Unused.** Vertical strips of 3, showing types *a, b, c*, supplied at a little higher rate. Used of some lines available, at slightly higher prices.

**Nov., 1914.—First Setting, with margin.**

	each
1d., type <i>a</i> or <i>c</i> .. ..	10 0
1d., " <i>b</i> .. ..	15 0
2½d., " <i>a</i> or <i>c</i> .. ..	15 0
2½d., " <i>b</i> .. ..	30 0

**Second and Fourth Setting  
George.**

½d., blue green, type <i>a</i> or <i>c</i> ..	0 4
½d., " " <i>b</i> .. ..	0 9
½d., yellow green type <i>a</i> or <i>c</i> ..	0 4
½d., " " <i>b</i> .. ..	0 9
1d., pale rose, type <i>a</i> or <i>c</i> ..	0 9
1d., " " <i>b</i> .. ..	1 6
1d., dull red, type <i>a</i> or <i>c</i> ..	0 9
1d., " " <i>b</i> .. ..	1 6
1d., carmine, type <i>a</i> or <i>c</i> ..	0 6
1d., " " <i>b</i> .. ..	1 0
4d., orange, type <i>a</i> or <i>c</i> ..	1 3
4d., " " <i>b</i> .. ..	2 6
5d., brown, type <i>a</i> or <i>c</i> ..	1 6
5d., " " <i>b</i> .. ..	3 0

**Kangaroo, first watermark, "wide"  
Crown.**

2d., type <i>a</i> or <i>c</i> .. ..	1 6
2d., " <i>b</i> .. ..	3 0
2½d., " <i>a</i> or <i>c</i> .. ..	1 0
2½d., " <i>b</i> .. ..	2 0
3d., " <i>a</i> or <i>c</i> .. ..	2 0
3d., " <i>b</i> .. ..	4 0
6d., " <i>a</i> or <i>c</i> .. ..	6 0
6d., " <i>b</i> .. ..	12 0
6d., inverted wmk., 25% extra.	
9d., type <i>a</i> or <i>c</i> .. ..	8 0
9d., " <i>b</i> .. ..	16 0
1/-, " <i>a</i> or <i>c</i> .. ..	10 0
1/-, " <i>b</i> .. ..	20 0
½/-, " <i>a</i> .. ..	—
10/-, " <i>a</i> or <i>c</i> .. ..	30 0
10/-, " <i>b</i> .. ..	45 0

**Transfer Errors.**

½d., type <i>a</i> and <i>c</i> , or <i>c</i> and <i>b</i> pair	10 0
1d. or 2d., type <i>a</i> and <i>c</i> or <i>c</i> and <i>b</i> pair	15 0
2½d. or 3d., type <i>a</i> and <i>c</i> , or <i>c</i> and <i>b</i> pair	25 0

**Oct., 1915.—Second wmk.,  
"Georgian" Crown.**

	each	s.	d.
2d., type <i>a</i> or <i>c</i> .. ..	1 6		
2d., " <i>b</i> .. ..	3 0		
6d., " <i>a</i> or <i>c</i> .. ..	1 6		
6d., " <i>b</i> .. ..	3 0		
9d., " <i>a</i> or <i>c</i> .. ..	2 3		
9d., " <i>b</i> .. ..	4 0		
1/-, " <i>a</i> or <i>c</i> .. ..	3 0		
1/-, " <i>b</i> .. ..	6 0		
2/-, " <i>a</i> or <i>c</i> .. ..	15 0		
2/-, " <i>b</i> .. ..	30 0		
5/-, " <i>a</i> or <i>c</i> .. ..	15 0		
5/-, " <i>b</i> .. ..	30 0		

**Dec., 1915-16. Third wmk.,  
"Narrow" Crown.**

2d., type <i>a</i> or <i>c</i> .. ..	0 9
2d., " <i>b</i> .. ..	1 6
3d., " <i>a</i> or <i>c</i> .. ..	1 0
3d., " <i>b</i> .. ..	2 0
2/-, " <i>a</i> or <i>c</i> .. ..	6 0
2/-, " <i>b</i> .. ..	12 0
2/-, " <i>a</i> or <i>c</i> , inverted wmk.	10 0
2/-, " <i>b</i> .. ..	20 0
20/-, " <i>a</i> or <i>c</i> .. ..	60 0
20/-, " <i>b</i> .. ..	120 0

**1918. Surcharged.**

1d. on 5d., type <i>a</i> or <i>c</i> ..	30 0
1d. on 5d., " <i>b</i> .. ..	60 0
1d. on 5d., strip of 3 ..	£6
1d. on 1/-, type <i>a</i> or <i>c</i> ..	30 0
1d. on 1/-, " <i>b</i> .. ..	60 0
1d. on 1/-, strip of 3 ..	£6

Used of the above Surcharges, at 25% less than above.

**1919-23. Fifth Setting; all "S's"  
normal.**

½d., 1d., 2d., 2½d., 3d., 4d., 5d., 6d., 9d., 1/-	set 12 0
2/- and 5/- .. ..	pair 20 0

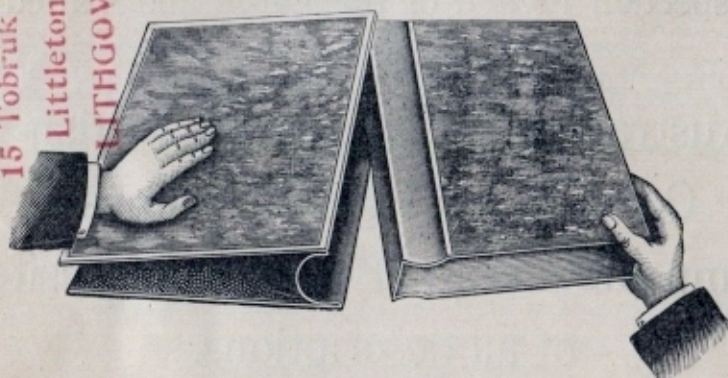
Vertical Strips, Pairs, Blocks, and Sheets of the Fifth Setting can be supplied unused.

**1919.**

½d., multiple wmk. .. ..	0 4
½d., " inverted wmk. .. ..	1 0

## LOOSE-LEAF ALBUMS.

Best British Make throughout.



H. C. Swanson  
 15 Tobruk St.,  
 Littleton,  
 LITHGOW.

**No. 75 THE "MINIATURE" LOOSE LEAF ALBUM.**  
 75 leaves, upright, 7 x 5 $\frac{1}{4}$ in., quadrille ruled, strongly bound.

Price

Extra leaves, 9d. per doz. Postage, 2d. doz. Extra Cover,

**No. 26. THE POPULAR LOOSE LEAF ALBUM.**  
 100 leaves, 9 $\frac{1}{2}$  x 7 $\frac{1}{4}$ in. quadrille ruled all over.

Strong cloth cover. Price, .

Extra leaves, 1/- doz., 8/- 100, Postage, 3d. doz.

**No. 40. THE "CROWN" LOOSE LEAF ALBUM.**  
 80 stout glazed paper leaves, 11 $\frac{1}{2}$  x 9 $\frac{1}{2}$ in., with border and quadrille ruling in grey.

Handsome cloth cover. Price,

Extra leaves, 1/9 doz Extra cover,

**No. 30. THE "FAVORITE" LOOSE LEAF ALBUM.**  
 100 stout glazed paper leaves, 11 $\frac{1}{2}$  x 9 $\frac{1}{2}$ in., with border and quadrille ruling in grey.

Bound in art green, or blue cloth. Price, .

Extra leaves, 1/9 doz. Postage, 3d. per doz. Extra cover,

**No. 66. THE "FAVOURITE DE-LUXE" LOOSE LEAF ALBUM.**  
 60 leaves, same as last, but with double-jointed linen leaves. Price, .

Extra leaves, doz. Postage, 4d. per doz. Extra cover,

Postage for Extra Covers—Victoria 1/6, Interstate 2/- approx.

### THE "ORDERLY" LOOSE-LEAF ALBUM.

100 leaves, 9 $\frac{1}{2}$  x 7 $\frac{1}{2}$ in. Squares printed in delicate grey ink.

Strong cloth cover. British Make. Price,

Extra leaves, 1/- per doz. Postage, 3d. per doz. Extra cover, .

### THE "WONDER" LOOSE LEAF ALBUM.

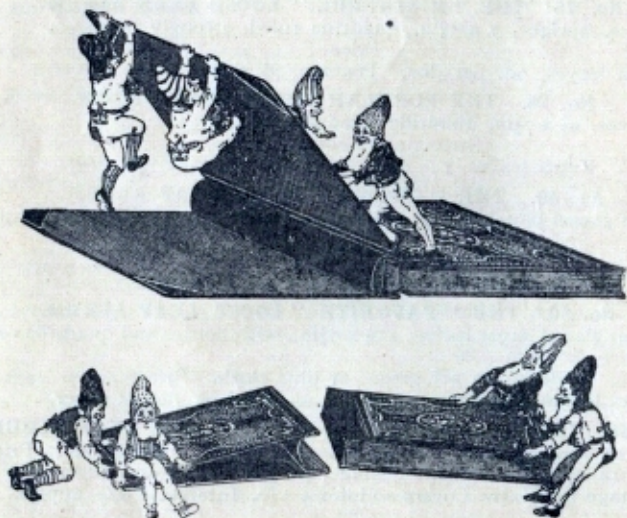
50 Heavy White Card Leaves, 10 $\frac{1}{2}$  x 8 $\frac{3}{4}$  in., printed quadrille in pale grey,  
 Bound in moire silk-grained cloth, with gold lettering and extra strong spring-  
 back binder. Stocked in Green and Red. British Make.

Price, .

Extra Leaves, 1/6 doz., 12/- 100, Postage, 3d doz. Extra Cover,

ALTSON'S BUILDING, CORNER COLLINS AND ELIZABETH-  
 STREETS, MELBOURNE.

Inspection Invited of the Large and Varied  
Stock of  
Australian, Pacific Islands, British-  
Colonial and Foreign Stamps.  
Stamp Albums and Philatelic Requisites  
of all descriptions.



SPECIAL NOTICE, MAY, 1945.

On account of the War, most Stamp Albums have become sold out. When New Stocks are available the Prices will be announced by special Circular or Advertisement.

**NOTICE TO CORRESPONDENTS.**

---

All stamps I sell are guaranteed Genuine. I do not deal in reprints.

Every communication should bear full address, and an unused stamp for return postage must **ALWAYS** be enclosed. Name and Address should be written clearly on every letter.

As I accept no responsibility for stamps, &c., lost in transit, letters of more than ordinary value should be sent registered.

Correspondence in English and French,

---

**Terms.**—Nett cash in advance; payment by Postal Note or Money Order.

Bank Notes may be sent by Registered Letter.

Cheques to have Exchange added.

**POSTAGE EXTRA ON ORDERS FOR STAMPS UNDER 5/-.**

Postage Extra on all Stamp Albums and Accessories.

---

---

---

Extended Terms of Payment can be arranged.

Current Accounts for Regular Customers.

**Note the Address :**

**Altson's Building, Corner Collins and Elizabeth Streets**

Second Floor. Take Lift at Elizabeth St. Entrance.

Cables: "Philately," Melbourne

Telephone Central 8253.



*H. C. Swanton*  
15 Tobruk St.,  
Littleton,  
LITHGOW.

WM. ACKLAND, DEALER IN AUSTRALIAN AND FOREIGN STAMPS:

---

ACKLAND'S  
SPECIAL CATALOGUE  
OF  
AUSTRALIAN STAMPS



*W. C. Swanston  
15 Tabrak St.,  
Melbourn  
VICTORIA*

Wholly Set Up and Printed in Australia by COLLIÉ BROS.,  
Barry Lane Melbourne, C 1.

---

ALTSON'S BUILDING, CORNER COLLINS AND ELIZABETH  
STREETS, MELBOURNE.