

One Penny Die I, Plate 173, 1853 - 1854

Robert Folkard

This is a preliminary study, which is based upon the examination of 552 stamps from this plate, and covering 227 different letterings. It is therefore not complete and there are 11 letterings that have not been seen by the writer, except on the imprimatur photograph. The remaining 2 impressions have not been seen in any form as these are missing from the imprimatur sheet. Some of the conclusions are tentative and may require modification later. Research so far shows that the plate was very extensively repaired by re-entry and it is likely that few if any of the impressions remained in their original state throughout its lifetime. As some stamps have been found, which clearly appear to be third states, the repair to the plate must have been carried out on more than one occasion. There are two reasons why modifications of some of the conclusions arrived at in this study may prove to be necessary. First there are a few cases where stamps have been described as being a second state by coincident re-entry where this is probably so, but not certainly so, and one cannot be completely positive until further examples can be inspected to confirm or otherwise the conclusion that has been reached. Second there may well be some cases, where a stamp described as being a second state, may prove to be a third state, if a stamp should later be found showing an intermediate repair.

Each individual impression from the plate is separately described in the Schedule which follows, with the exception of HH & HJ. These are the letterings which are missing from the imprimatur sheet, where also there is no example of a plated stamp that has been seen. The relevant features are listed, first for the imprimatur, as seen on a Post Office Museum photograph of the imprimatur sheet, then for an imperforate stamp in state 1 and occasionally also in state 2. Next there are the perforated stamps in their various states, if more than one. The Schedule tabulates the diagnostic features which determine the state of the impression in each case.

The evidence adduced points to the conclusion that plate 173 was one of those plates which were the subject of Perkins Bacon & Company's experiment in printing from plates which had not been hardened. This experiment was concluded at the beginning of March 1854, when Perkins Bacon & Company wrote that they were proposing immediately to re-engage those plates which had not been hardened, then to harden them so that they would become equivalent to new plates. This was a similar procedure to that which was done with the first plate in April 1840, when plate 1 which also was not hardened, was re-entered throughout and thus became what is now known as plate 1b, and in its original state as plate 1a. As

indicated it seems extremely probable that plate 173 had every impression re-entered at least once. So far 172 different letterings have been seen in a second state. It may be interesting to quote Perkins Bacon and Company's letter of March 6th 1854 to Mr. Ormond Hill. This is given by E. D. Bacon in "The Line Engraved Postage Stamps of Great Britain" and is as follows:—

"As it occasionally turns out that we lose entire postage plates, from the wear of one or two of the heads, which cannot be successfully re-entered in consequence of hardening, we have lately tried several plates without hardening hoping that the wear would justify such proceeding, which would have been very desirable, if successful, as it would then be easy to re-enter any head which in the course of printing was found to need it. We have had but just enough experience to prove that although we gained the latter object, the plates do not, on an average, last more than half as long, and have therefore determined to abandon it, but as a considerable time will be saved in re-engraving those plates over what would be required for entirely new ones, we propose immediately to re-engrave them, and then submit them to the usual hardening process and afterwards to prepare new plates, but as far as the purposes of Government go, these are in themselves the same as new plates."

Plate 173 had a remarkably long life. It was finished 27.5.53 but it was not put to press until three months later on 19.8.53. It was not defaced until 8.2.55 (Postage Stamps of Great Britain Part 1). It could therefore have been in use for up to seventeen months. It may, however, well have been withdrawn from use some time before its defacement, and there is no record of the actual date when printings from it ceased. The fact that it must have been in use for a long time is evidenced by the large number of stamps that have survived from this plate, particularly those that were perforated. Only perforation 16, of course, as the second official perforation, perforation 14, did not come into use until January 1855. Although the stamps are common in the perforated form they are by no means common imperforate, as this is one of the scarcer imperforate plates.

The Tables of Rarity in "Postage Stamps of Great Britain" set out the comparative rarity of both the Imperforate Alphabet II stamps and the Die I Alphabet II Perforated Stamps. In the imperforate form plate 173 comes thirtysixth out of the forty four plates, being only more common than plates 136, 137, 139, 140, 141, 146, 174 and 175. In the perforated form, however, plate 173 is the commonest of all the plates (perforation 16 only) with the exception of plate 176.

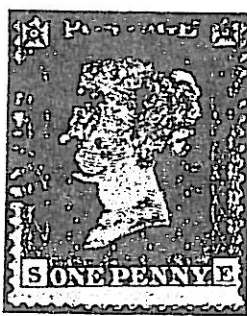
The date when plate 173 was finished and more particularly when it was put to press in August



Imprimatur state 1



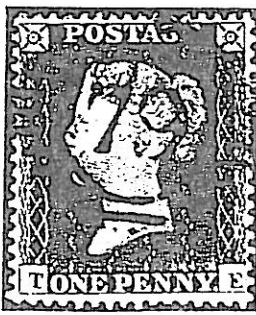
All state 2
Note dividing line between TF and TG
is shorter in state 2.



All state 2



State 2



State 1



State 3

1853 makes it quite a likely candidate for being one of the experimental unhardened plates. Although it is perhaps a little earlier than one would have expected, unless Perkins Bacon and Company had been carrying out their trial for some time before they wrote to Mr. Ormond Hill, it does nonetheless, allow them plenty of time to evaluate the success or otherwise of it. The plate has several features which facilitate a study of it, to determine whether or not it was one of those plates included in Perkins Bacon's experiment with unhardened plates.

These are:—

(1) It was a much used plate and perforated stamps from it in particular are plentiful, so that there is the availability of material which is essential for the purpose of study.

(2) Imperforate stamps although not common are sufficiently plentiful to enable one to obtain a reasonable number of examples for matching imperforate and perforated stamps.

(3) As a general rule, and with probably only very few exceptions, imperforate stamps will be from earlier printings than perforated stamps.

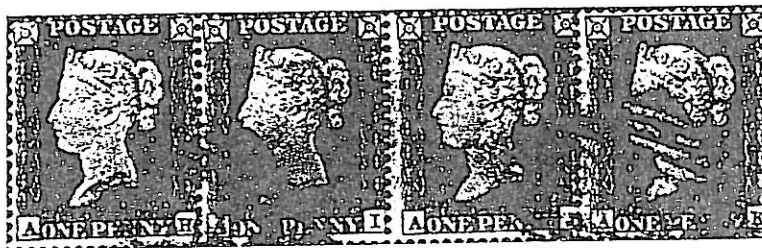
(4) Quite apart from any diagnostic features of re-entry, a strong impression on a perforated stamp compared with a weaker or more worn impression on an imperforate stamp points to a repair by re-entry.

The first major repair would appear to have been carried out at about the same time that stamps from this plate began to be perforated, as the imperforate stamps are normally state 1, whereas the perforated stamps are usually state 2. The relative proportions of the stamps examined in this study being:—

* Imperforate Stamps	State 1	— 256
Imperforate Stamps	State 2	— 6
Perforated Stamps	State 1	— 28
Perforated Stamps	States 2 and 3	— 261

* Due to special circumstances the actual numbers of the imperforate stamps and perforated stamps, which have been examined in this study, do not give an accurate indication of their comparative rarity. The imperforate stamps from this plate are much less common than the perforated stamps.

'AL' of which the writer has seen only one copy, being part of a block of ten, is too much off-centre to be certain of its state, and there is no imprimatur for comparison. The perforated stamp seen is probably state 2.



All state 1



All state 2

Wherever possible the question of whether a repair has been made or not has been determined by comparison of a state 1 stamp with a state 2 stamp, but in a number of cases this has not been possible. In these cases the state of the stamp has had to be determined by comparing it with the imprimatur photograph. The repair of the plate was evidently made with great precision, as in the majority of cases the re-entry is entirely coincident. In most of the remaining cases the re-entry is very nearly coincident, with only a very slight duplication of any part of the impression or more usually only a thickening of part of the impression. There are very few cases of any clear duplication. There is no evidence of a different roller die being used.

There are no distinguishing roller flaws to prove a second state. Consequently, as is to be expected, there are a number of instances where a perforated stamp, which is almost certainly a repaired impression, is very similar in general appearance to the original impression on the imprimatur sheet. Where imperforate stamps are available, these comparatively early printings, which may show some signs of wear, are much more noticeably different from the equivalent perforated stamp. Nevertheless in the majority of cases the perforated stamps, which are necessarily comparatively late printings, do show, on a careful comparison with the imprimatur photograph, some signs, which may be small, indicating a re-entry. The features to be looked for include one or more of the following:—

- (1) The right side frequently shows some weakness in the original state and even breaks in it, although there are about 28 cases where the right side has been partly re-cut. Sometimes this re-cutting is not very evident. Re-entry frequently leads to a strengthening or even thickening of the right side. This feature cannot always be seen owing to poor lateral entering.
- (2) The network of white loops and the outer network of interlacing white lines are sometimes comparatively thick even on the imprimatur. Wear leads to these becoming markedly broader in many instances. When re-entered the lines of these networks are frequently thinned, sometimes markedly so.
- (3) Similar remarks apply to the left side and the left network of white lines, but these generally seem to be less affected by re-entry. The left side is usually much weaker than the right side and in only about six instances have the left sides been partly re-cut.
- (4) Poor centering is frequent on stamps from this plate as it was somewhat irregularly laid down. In such cases many of the clues to a plate repair are not seen and this particularly applies to the side lines and even part of the marginal networks.
- (5) Re-entering very frequently leads to compression of the white letters of "ONE PENNY" and "POSTAGE". This seems to

occur a little more frequently in the value than in postage. It may consist of only very slight thinning of the letters, but with better definition of the serifs. This is especially noticeable when the letters have begun to show signs of wear, with broadening of the letters and particularly of the serifs. In cases where the re-entry has not been completely coincident there may be a more marked constriction of the letters which can become markedly thinner than normal.

(6) The top and base lines may be thickened after re-entry and this may include slight duplication of the tops and bottoms of the corner squares.

(7) In some cases there is a thickening or slight duplication of the corner stars. In most cases this only affects the inner ring of rays. In clear printings this may show as actual duplication of the rays, but often it shows as a broadening and running together of adjacent rays, resulting sometimes in a broad ring of solid colour as the ends of the rays tend to disappear with wear. The larger outer rays to each corner of the upper squares occasionally become thicker and more rarely slightly duplicated.

(8) The east and west sides of both the upper and lower corner squares may become thicker and in some cases show duplication so that they have the appearance of guide lines. Duplication may extend a little in the side margin below or above these squares.

(9) The check letters may show signs of becoming thinner or fainter on re-entry. There are some cases where they have probably been retouched.

(10) Transfer Roller Lines in one of the side margins have only been seen in a few cases.

(11) The marginal dividing line in the lower part of the margin between TF and TG is shortened by at least one eighth of an inch and no longer extends upwards between the two stamps as on the imprimatur, but terminates just below them.

(12) There are only a few cases where the re-entry is non-coincident, and in no case are there prominent marks of a non-coincident re-entry. Such cases as do occur are usually confined to a duplication of the outer frame lines of one or more of the corner squares.

The writer is indebted to Paul Witham and Winston Hollins both for the material which they have generously made available to him for the purpose of furthering the pursuit of this study and also for their helpful comments and advice. The remarkable block of four SE-TF showing among other features the shortening of the dividing mark between TF and TG was kindly loaned by Winston Hollins and is included in the illustrations. Ralph

Carr has also given great assistance in this study by making available for examination the majority of the imperforate stamps which have been seen.

Acknowledgements are made to Sir Edward Bacon and Charles Nissen and Company Limited for the letter of Perkins Bacon and Company Limited quoted from "The Line-Engraved Postage Stamps of Great Britain" and to the Royal Philatelic Society of London for the data regarding the comparative rarity of plates, which is taken from "The Postage Stamps of Great Britain" Parts I and II.

The illustration showing part of the Imprimatur sheet is reproduced by courtesy of the Post Office.

Abbreviations used in the Schedule

Impr. Imprimatur.
I Imperforate.
P Perforated.
E East.
W West.
N North.
CM. Constant Mark.
TRL Transfer Roller Line.

Check Letters are shown in inverted commas.

(To be continued)

The Royal Wedding



Prince Charles was given a special preview of the Royal Wedding stamps when he was presented with a set of the issue by Mr. Ron Dearing, chairman of Posts and National Giro-bank on June 10.

The Prince was in Bradford to open Royal Mail House, a £4½m head post office and mechanised letter sorting office. As a memento of his visit he was given a mounted and framed sheet of 100 of the special stamps which are to be issued on July 22.

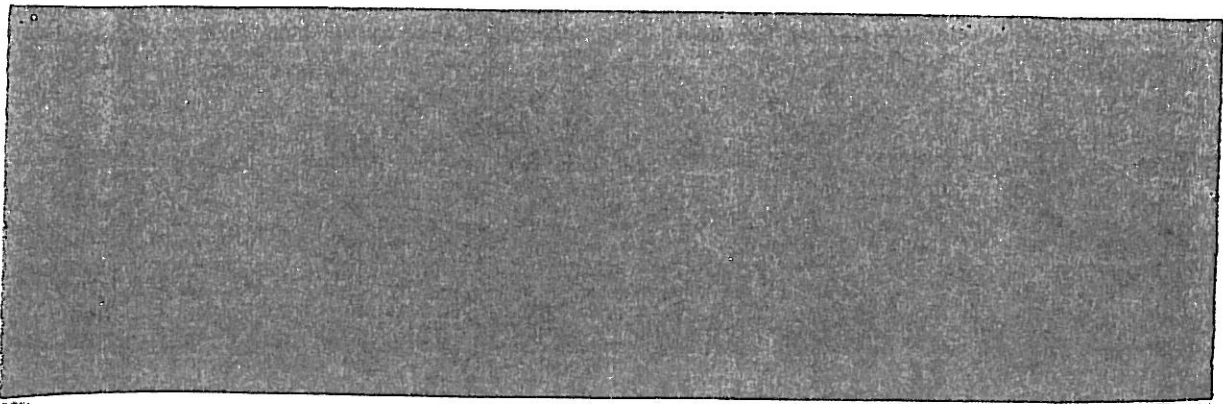
Designer of the stamps is Jeffrey Matthews

and the photograph was specially taken by Lord Snowdon.

Prince Charles toured both the administration and sorting offices of the new complex which serves an area of some 500 square miles in West Yorkshire. Equipped with the most up-to-date sorting machinery, the office will handle more than three million items each week and is another part of the Royal Mail's national mechanisation programme.

The Royal Wedding stamps go on sale a week before the wedding of Prince Charles and Lady Diana Spencer at St. Paul's Cathedral.

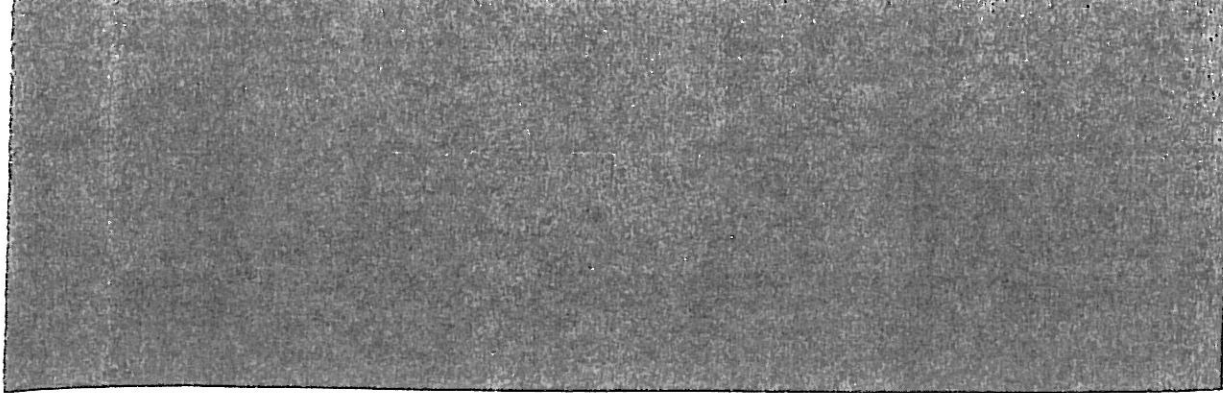
	State	Impr- matur Imperf. Perf.	East Side	East Network	West Side	West Network	Postage Com- pressed	Value Compressed
AA	1	Impr.	Weakness top & base	Slightly thinned			No	No
	1	I	Weakness top & base				No	No
	2	P					Slightly	Yes
AB	1	Impr.	Weak at top		Weak		No	No
	2	P	Stronger		Stronger		No	No
AC	1	Impr.	Weak at top		Weak		No	No
	1	I	Weaker at top		Weak		No	No
AD	1	I	Weak, but lower † recut	Worn	Weak	Worn	No	No
	2	P	Some weakness				Yes	Yes
AE	1	Impr.	Unbroken		Weak		No	No
	1	I	Unbroken		Weak		No	No
	2	P	Unbroken		Stronger		Yes	Yes
AF	1	I	Weak top & base				No	No
	1	I						
AG	1	Impr.	Unbroken		Weak			No
	1	I	Unbroken		Weak			No
	2	P	Strong					Yes
AH	1	Impr.	Weak	Normal	Weak			No
	1	I	Weak	Slightly worn	Slightly worn		No	No
	1	P	Weaker	Slightly worn	Slightly worn			No
	2	P	Stronger	Thinner	Stronger	Slightly thinner		Yes
AI	1	Impr.		Slightly thinned	Weak			No
	1	I			Weak		Weak	No
	1	P						No
	2	P						Yes
AJ	1	P			Weak			
	2	P			Stronger			
AK	1	P			Weak			
	2	P			Stronger			
AL		P						
BA	1	Impr.	Weak top & base	Slightly thinned				No
	1	I	Weak top & base					
	2	P	Stronger					Yes
BB	1	Impr.	Weak upper †	Slightly thinned				No
	1	I	Weak upper †					
	1	P	Weaker upper †					No
	1	Impr.	Strong				No	No
	1	I	Weaker				No	No
	2	P	Slightly stronger				Slightly	Yes
BD	1	Impr.		Slightly thinned			No	No
	1	I					No	No
	2	P					Slightly	Slightly
BE	1	Impr.	Weak at top	Slightly thinned				No
	1	I	Weak at top					
	2	P	Stronger					Slightly
BF	1	Impr.	Weak	Slightly thinned			No	No
	2	P	Stronger					
BG	1	Impr.	Weak at top	Slightly thinned				
	1	I	Weak at top					
	2	P						
BH	1	Impr.	Weak at top	Slightly thinned				No
	2	P						
BI	1	Impr.	Unbroken	Slightly thinned			No	No
	1	I	Unbroken					
	2	P					Yes	Yes
BJ	1	Impr.	Weak upper †	Slightly thinned				No
	2	P						
BK	1	Impr.			Lower † re-cut	Worn	No	No
	1	I			Upper † very worn		Restored	No
	2	P			Restored	Restored	Yes	Yes



	State	Check Letters	Other Features and Remarks	No. of stamps
AA	1			
	1			
	2		Stars slightly thicker, E side NE square double	2
AB	1	Normal		1
	2	Both thinner	Stars thicker, E side NE, & N & W sides NW square all thicker	
AC	1	Normal	E side NE square thick	1
	1	Normal	E side NE square thick	
AD	1	Normal	Worn impression	2
				1
	2		E side NE square double, Blur E of SE square	
	1			1
	1		Rather worn impression	
AF	2		E side NE square thicker	1
	1		E side NE square thick, Plating not proved	1
				1
AG	1	Normal		
	1	Normal		
	2	Both thinner	Strong probably early impression	1
AH	1	Normal	E side NE square double	2
	1	Normal		
	1	Normal		1
	2	Both thinner	E side NE square thicker	1
AI	1	Normal	E side NE square thick	2
	1	Normal	E side NE square thick	
	1	Normal	E side NE square thick	2
	2	'A' thinner	E side NE & N side NW square both thicker.	1
AJ	1	Normal		3
	2	Both thinner	E side NE square double	1
AK	1	Normal		1
	2	Both thinner		1
AL			I in a block of 10, probably state 2, characteristics not clear	1
BA	1	Normal		
	1	Normal	E side NE square thick	
BB	2	'B' thinner	Stars & E side NE square all slightly thicker	2
	1		Lower $\frac{1}{2}$ E side recut	1
	1		Lower $\frac{1}{2}$ E side recut	
	1		Lower $\frac{1}{2}$ E side recut, Worn impression	1
BC		Normal		1
	1	Normal		
BD	2	'B' thinner	Stars slightly thicker, N side NW square double	1
	1			1
	1			
BE	2			2
	1			2
	1			
	2		Base line thicker	1
BF	1	Normal		2
	2	Both thinner		
BG	1	Normal		2
	1	Normal		
	2	Slightly thinner	W star slightly thicker, Base line thicker	1
BH	1	Normal	Lower $\frac{1}{2}$ E side re-cut	1
	2	Both thinner	E side NE & N NW square thicker, Top of 'B' broken, & bar of 'H' missing	3
BI	1			
	1			
	2		E side NE & N side NW square both thicker	1
BJ	1	Normal	Lower $\frac{1}{2}$ E side re-cut	3
	2	Both thinner	E side NE square double	
BK	1	Normal		3
	1	Normal		
	2	'B' faint	E side NE square double	3
				2

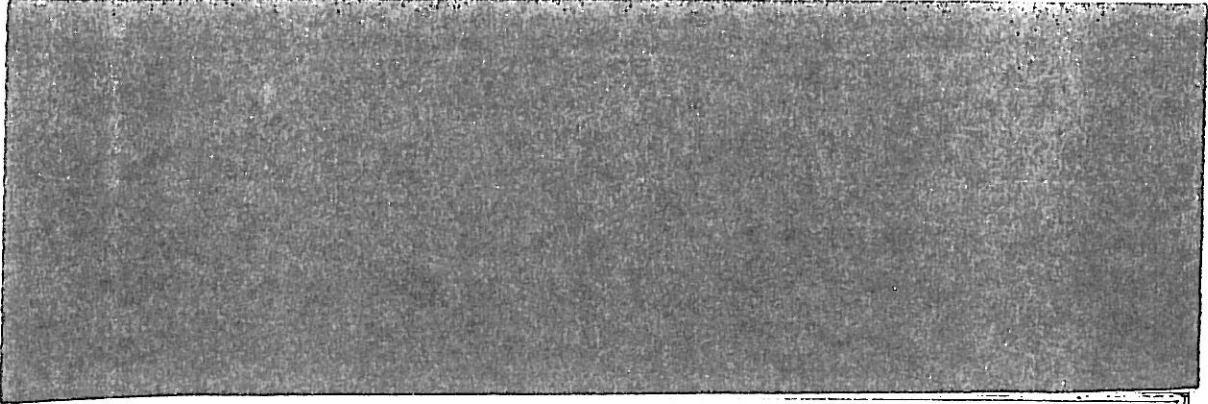
DIE I, PLATE 173 — (contd.)

	State	Impr- matur Imperf. Perf.	East Side	East Network	West Side	West Network	Postage Cum- pressed	Value Compressed
BL	1	Impr.						No
	1	I	Weak at top			Slightly worn		No
	2	P				Slightly thinned		Slightly
CA	1	Impr.						No
	2	P						Yes
CB	1	Impr.	Weak				No	No
	1	I	Weak				No	No
	1	P	Weak				No	No
CC	2	P	Stronger	Slightly thinned			Yes	Yes
	1	Impr.					No	No
CD	2	P					Yes	Yes
	1	Impr.	Weak lower part				No	No
CE	1	I	Weak lower part				No	No
	2	P	Stronger				Slightly	Slightly
CF	1	Impr.	Weak top & base		Lower 1 re-cut			
	1	I	Weak top & base		Weak		No	No
CG	2	P			Weak		No	No
	1	Impr.	Unbroken		Stronger		Yes	Yes
	1	I	Weak top & base				No	No
CH	2	P	Weak top & base				Slightly	Slightly
	3	P	Slightly weaker	Slightly thinned			Yes	Yes
	1	Impr.	Some weakness			Slightly thinned	No	No
CI	2	P	Stronger	Slightly thinned			Yes	Yes
	1	Impr.	Unbroken				No	No
CJ	2	I	Slightly stronger	Slightly thinned			Slightly	Slightly
	1	Impr.	Weak				No	No
CK	2	P	Stronger	Slightly thinned			Yes	Yes
	1	Impr.	Unbroken		Lower 1 re-cut			No
CL	1	I	Unbroken		Upper 1 weaker			No
	2	P	Slightly weaker		Slightly stronger	Slightly thinned	No	Yes
	1	Impr.	Unbroken		Weak		No	No
A	1	I	Weak near top		Weak		No	No
	2	P	Weaker		Weaker	Slightly thinned	Slightly	Yes
	3	P			Stronger			
DB	1	Impr.	Weak top & base				No	No
	2	I	Stronger	Slightly thinned			Yes	Yes
	3	P		Thinner			Yes	Yes
DC	1	Impr.	Weak		Weak			
	1	I	Weak		Weak			
	2	P			Stronger			
DD	1	Impr.	Unbroken				No	No
	1	I	Unbroken				No	No
DE	2	P	Slightly stronger				Slightly	Slightly
	1	Impr.	Weak near top				No	No
DF	1	I	Weak near top				No	No
	2	P	Slightly stronger				Yes	Yes
	1	Impr.	Weak		Weak		No	No
DG	1	I	Weak		Weak		No	No
	2	P	Stronger	Thinned	Slightly stronger	Slightly thinner	Slightly	Yes
DH	1	Impr.	Weak		Weak			No
	2	P			Slightly stronger		Slightly	Yes
DI	1	Impr.	Weak		Weak	Thinner	No	No
	2	P	Stronger	Thinner	Slightly stronger		Slightly	Slightly
DI	1	Impr.	Weak top & base		Lower 1 re-cut		No	No
	2	P	Slightly stronger	Slightly thinner			Yes	Yes



	State	Check Letters	Other Features and Remarks	No. of stamps
BL	1	Normal		
	1	Normal		
	2	'B' faint		1
CA	1	Normal		1
	1	Normal		
	2		W. star slightly thicker. N side NE square thicker	1
CB	1			2
	1			
	1			1
	2		Stars slightly thicker, N side NW square & E side NE square thicker	2
CC	1			2
	2		W. star slightly thicker	
CD	1	Normal		1
	1	Normal		
	2	Slightly thinner		1
CE	1	Normal		2
CF	1	Normal		
	1	Normal		1
	2	Thinner		
CG	1	Normal		2
	1	Normal		
	2	Slightly thinner	Stars slightly thicker	1
	3	'C' still thinner	Stars thicker	1
CH	1	Normal	Lower $\frac{1}{2}$ E side re-cut	1
	2	Both thinner	Stars slightly thicker. Bar of 'H' missing	
CI	1	Normal		6
	2			
CJ	1	Normal		1
	2	Slightly thinner	W. star slightly thicker. N & W sides NW square thicker	1
CK	1	Normal		
	1	Normal		1
	2	'K' thinner	W star slightly thicker	1
CL	1	Normal		1
	1	Normal		
	2	Normal	Engraving to head relatively strong	2
	3	'C' thinner	Top line thicker, N side NW square double. Engraving to head weak	1
L	1	Normal		1
	2	Normal		
	3	'D' slightly thinner	Base line & top line both thicker. Stars thicker	1
DB	1	Normal		1
	1	Normal		
	2	Both thinner		2
DC	1	Normal		1
	1	Normal		
	2	'D' slightly thinner		1
DD	1	Normal		3
	1	Normal		
	2	Slightly thinned	E side NE square thicker	1
DE	1	Normal		2
	1	Normal		
	2	Slightly thinner	In 1 stamp W network is worn	2
DF	1	Normal		1
	2	'D' thinner		
DG	1	Normal		1
	1	Normal		
	2	Slightly thinner		1
DH	1	Normal		2
	2	Slightly thinner		
DI	1	Normal		1
	2		Stars slightly thicker. N side NE square thicker	2

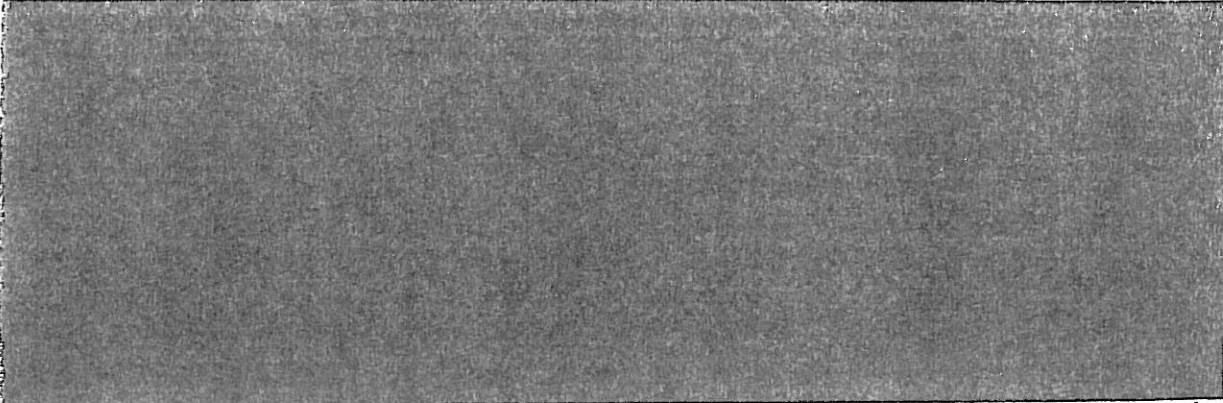
	State	Impr- matur Imperf. Perf.	East Side	East Network	West Side	West Network	Postage Com- pressed	Value Compressed
DJ	1	Impr.	Weak		Weak		No	No
	1	I	Weak		Weak		No	No
	2	P			Weaker		Yes	Yes
DK	1	Impr.	Unbroken				No	No
	1	I	Unbroken				No	No
	2	P					Slightly	Slightly
DL	1	Impr.	Unbroken				No	No
	1	Impr.	Weak near top		Weak		No	No
	1	I	Weak top & base		Weaker		No	No
	2	P	Slightly stronger		Weak	Slightly thinner		Slightly
EB	1	Impr.	Weak				No	No
	1	I	Weak				No	No
	2	P		Slightly thinned		Slightly thinned	Slightly	Yes
EC	1	Impr.	Unbroken				No	No
	1	I	Weak near top				No	No
	2	P	Stronger	Slightly thinned			Slightly	Yes
ED	1	Impr.	Unbroken				No	No
	1	I					No	No
EE	1	Impr.	Weak near top				No	No
	1	I					No	No
EF	1	Impr.	Weak top & base				No	No
	1	I	Weak top & base				No	No
	2	P	Stronger	Slightly thinned			Slightly	Yes
EG	1	Impr.	Unbroken		Weak		No	No
	1	I			Weak		No	No
	2	P			Slightly stronger	Slightly thinned	Slightly	Slightly
EH	1	Impr.	Weak near top				No	No
	1	I	Weak near top				No	No
	2	P	Slightly stronger	Slightly thinned		Slightly thinned		Slightly
EI	1	Impr.	Unbroken				No	No
	1	I	Unbroken				No	No
	2	P			Slightly stronger		Slightly	Slightly
EJ	1	Impr.	Weak top & base				No	No
	1	I	Weaker				No	No
	2	P		Slightly thinned		Slightly thinned	Slightly	Yes
	1	Impr.	Unbroken				No	No
	1	I	Unbroken				No	No
	2	P					Slightly	Slightly
EL	1	Impr.	Unbroken				No	No
	1	I	Weak near top				No	No
FA	1	Impr.	Weak near top					No
	2	P						Slightly
FB	1	Impr.	Somewhat weak		Weak		No	No
	2	P		Slightly thinner	Slightly stronger	Slightly thinner	Yes	Yes
FC	1	Impr.	Unbroken				No	No
	1	I	Unbroken				No	No
FD	1	Impr.	Weak top & base				No	No
	1	I	Weak top & base				No	No
FE	1	Impr.	Unbroken		Weak		No	No
	1	I	Weak near top		Weak		No	No
	2	P	Weak near top		Weak		No	Yes
FF	1	Impr.	Weak top & base				No	No
	1	I	Weak top & base				No	No
FG	1	Impr.	Weak near top				No	No
	1	I	Weak near top				No	No
	1	P	Weak near top				No	No
FH	1	Impr.	Unbroken				No	No
	1	I	Unbroken				No	No
	1	P	Unbroken				No	No
	2	P	Unbroken				No	Slightly
FI	1	Impr.	Unbroken				No	No
	1	I	Unbroken				No	No



	State	Check Letters	Other Features and Remarks	No. of stamps
DJ	1	Normal		
	1	Normal		1
	2	'D' slightly thinner		2
DK	1	Normal		
	1	Normal		1
	2	'K' slightly thinner		1
DL	1	Normal		
	1	Normal		
	1	Normal	West Network worn in 1 stamp	2
	2	Slightly thinner		1
EB	1	Normal		
	1	Normal		1
	2	'E' slightly thinner		1
EC	1	Normal		
	1	Normal		1
	2	Slightly thinner	Base line thicker. One stamp rather worn	2
ED	1	Normal	N side NW square thick	
	1	Normal	N side NW square thick, one stamp rather worn	2
EE	1	Normal		
	1	Normal	1 stamp engraving to head weak	2
EF	1	Normal		
	1	Normal	E side NE square thick	1
	2	'E' thinner	E side NE square thicker	2
EG	1	Normal		
	1	Normal	Engraving to head worn	3
	2	Normal	Engraving to head stronger	1
EH	1	Normal		
	1	Normal		2
	2	'E' slightly thinner		1
EI	1	Normal		
	1	Normal		4
	2	Normal	1 stamp strong impression, apparently re entered; 1 stamp shows wear	2
EJ	1	Normal		
	1	Normal	1 stamp shows considerable wear	2
	2			1
EK	1	Normal		
		Normal		2
		Slightly thinner		2
EL	1	Normal		
	1	Normal		2
FA	1	Normal		
	2	'A' slightly thinner		1
FB	1	Normal	Lower 1 E side re-cut	
	2		Stars slightly thicker	1
FC	1	Normal		
	1	Normal	Signs of wear	1
FD	1	Normal		
	1	Normal	Engraving to head rather weak	1
FE	1	Normal	W side SW corner re-cut slightly on skew	
	1	Normal	W side SW corner re-cut slightly on skew	1
	2	'F' slightly thinner	W side SW corner re-cut slightly on skew, E star slightly thicker	1
FFA	1	Normal		
FG	1	Normal		
	1	Normal		1
	1	Normal		2
FH	1	Normal	Bar of 'H' thin	
	1	Normal	Bar of 'H' thin	1
	1	Normal	Bar of 'H' thin	1
	2	Slightly thinner	Bar of 'H' stronger	3
FI	1	Normal		
	1	Normal		1

ONE PENNY DIE I, PLATE 173, 1853-54 Robert Folkard (Continued from Vol. 19, page 83)

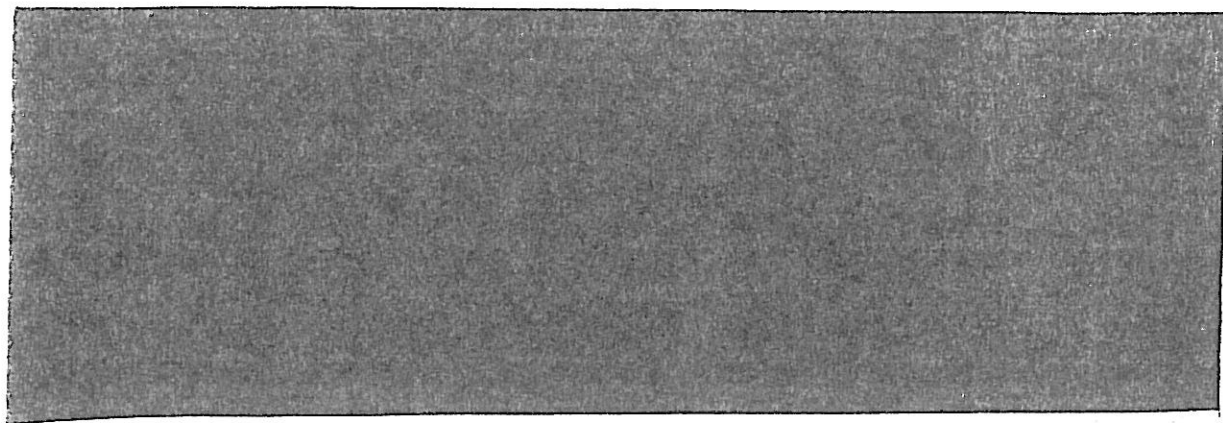
	State	Impr- matur Imperj. Perf.	East Side	East Network	West Side	West Network	Postage Com- pressed	Value Compressed
FJ	1	Impr.	Unbroken				No	No
	1	I	Unbroken				No	No
FK	1	Impr.	Weak near top				No	No
	1	I	Weaker				No	No
FL	1	Impr.	Weak near top				No	No
	1	I	Weak near top				No	No
GA	1	Impr.	Rather weak				No	No
	1	I	Weaker				No	No
	2	P	Slightly stronger	Slightly thinner		Slightly thinner	Yes	Yes
GB	1	Impr.	Weak				No	No
	1	I	Weak				No	No
	1	P	Weak				No	No
	2	P	Stronger				Yes	Yes
GC	1	Impr.	Unbroken				No	No
	1	I	Weak				No	No
	2	P	Slightly stronger				Slightly	Slightly
GD	1	Impr.	Weak top & base				No	No
	1	I	Weak top & base				No	No
	2	P	Slightly stronger				Slightly	Yes
GE	1	Impr.	Unbroken				No	No
	1	I	Unbroken				No	No
	2	P	Slightly stronger				No	Slightly
GF	1	Impr.	Weak near base				No	No
	1	I	Weak near base				No	No
	2	P	Slightly stronger	Slightly thinner		Slightly thinner	No	Slightly
GG	1	Impr.	Unbroken				No	No
	1	P	Unbroken				No	No
	2	P	Unbroken	Slightly thinner		Slightly thinner	No	No
GH	1	Impr.	Weak near top				No	No
	2	P		Slightly thinner			No	Yes
GI	1	Impr.	Unbroken				No	No
	1	I	Weak near top				No	No
	2	P	Slightly weaker				Slightly	Yes
GJ	1	Impr.	Unbroken				No	No
	2	P	Weak near top	Slightly thinner			Slightly	Yes
K	2*	P	Rather weak				Slightly	Burr Ru.
GL	2	P						Probably
HA	1	Impr.	Weak				No	No
	1	I	Weak				No	No
	2	P	Stronger				Yes	Yes
HB	1	Impr.	Weak				No	No
	2	P	Stronger	Slightly thinner			Slightly	
HC	1	Impr.	Unbroken				No	No
	1	I	Unbroken				No	No
	1	P	Unbroken				No	No
HD	1	Impr.	Weak				No	No
	1	I	Weak				No	No
	2	P	Stronger	Slightly thinner			Slightly	Yes
HE	1	Impr.	Weak near top				No	No
	1	I	Weak near top				No	No
HF	1	Impr.	Weak				No	No
	1	I	Weak				No	No
HG	1	Impr.	Unbroken				No	No
	1	I	Unbroken				No	No
HH								
HI	1	Impr.	Unbroken				No	No
	1	I	Unbroken				No	No
HJ								



	State	Check Letters	Other Features and Remarks	No. of stamps
FJ	1	Normal		
	1	Normal		1
FK	1	Normal		
	1	Normal	1 stamp shows considerable signs of wear	4
FL	1	Normal		
	1	Normal		1
GA	1	Normal		
	1	Normal		1
	2	Normal		1
GB	1	Normal		
	1	Normal		1
	1	Normal		1
	2	'B' slightly thinner		1
GC	1	Normal		
	1	Normal		3
	2	Normal	E side NE square slightly thicker. Engraving to head weak	2
GD	1	Normal		
	1	Normal		1
	2	'D' slightly thinner		2
GE	1	Normal		
	1	Normal		2
	2	Slightly thinner		2
GF	1	Normal		
	1	Normal		1
	2	Normal		1
GG	1	Normal		
	1	Normal		1
	2	Slightly thinner		1
GH	1	Normal		
	2	Normal	E star slightly thicker	1
GI	1	Normal		
	1	Normal		2
	2	'I' slightly thinner	Base line thicker. E side NE square thicker. 1 stamp late worn impression	2
GJ	1	Normal		
	2	Slightly thinner	Stars slightly thicker, late worn impression	2
GK	2*	Appear Normal	*State not certain, but probably state 2 as other stamps in strip of 4 are	1
GL	2	Probably thinned	Imprimatur not seen for comparison, late worn impression	1
HA	1	Normal		
	1	Normal		1
	2		Stars slightly double. E side NE and W & N side NW square all double	2
HAB	1	Normal		
	2		E side NE square thicker	1
HAC	1	Normal		
	1	Normal		2
HAD	1	Normal		
	1	Normal		1
	1	Normal		2
	2	'D' slightly thinner	E side NE square thicker	1
HAE	1	Normal		
	1	Normal		1
HAF	1	Normal		
	1	Normal		1
HAG	1	Normal		
	1	Normal		2
HAA	1	Normal		
	1	Normal		1
HAI	1	Normal		
	1	Normal		3
HAJ	1	Normal		

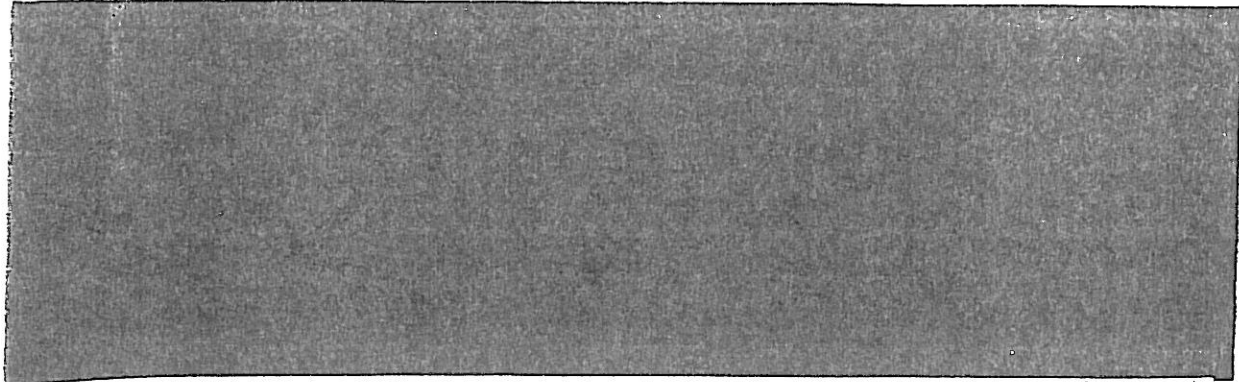
DIE I, PLATE 173 — (contd.)

	State	Impri- matur Imperf. Perf.	East Side	East Network	West Side	West Network	Postage Com- pressed	Value Compressed
HK	1	I	Weak near top & base		Weak		No	No
HL	1	Impr.	Unbroken		Weak		No	No
	1	I	Weak near top		Weak		No	No
IA	1	Impr.	Weak				No	No
	1	I	Weaker				No	No
	2	P	Stronger	Thinner		Slightly thinner	Slightly	Yes
IB	1	Impr.	Weak		Weak		No	No
	1	I	Weaker		Very weak		No	No
	2	P	Stronger	Thinner	Stronger	Thinner	Yes	Yes
IC	1	Impr.	Slightly weak at top				No	No
	1	I	Slightly weak at top				No	No
	2	P	Stronger	Thinner		Thinner	Slightly	Yes
ID	1	Impr.	Slightly weak				No	No
	1	I	Slightly weaker				No	No
	2	P	Stronger	Thinner		Thinner	Yes	Yes
IE	1	Impr.	Unbroken				No	No
	1	I	Weaker				No	No
IF	1	Impr.	Weak top & base				No	No
	1	I	Weaker				No	No
	2	P	Stronger	Thinner		Slightly thinner	No	Slightly
IG	1	Impr.	Unbroken				No	No
	2	I	Stronger				No	No
	3	P	Strong	Thinner		Slightly thinner	Yes	Yes
IH	1	Impr.	Weak top & base				No	No
	1	I	Weak top & base				No	No
	2	P	Stronger	Thinner		Thinner	Yes	Yes
II	1	Impr.	Unbroken		Weak		No	No
	1	I	Unbroken		Weak		No	No
	2	P	Slightly stronger	Slightly thinner	Stronger		Yes	Yes
IJ	1	Impr.	Weak near base		Weak		No	No
	1	I	Weak near base	Slight wear	Slightly weaker	Slight wear	No	No
IK	1	Impr.	Unbroken				No	No
	1	I	Unbroken				No	No
	1	Impr.	Unbroken				No	No
JA	1	Impr.	Weak top & base				No	No
JB	1	Impr.	Weak		Weak		No	No
	1	I	Weaker	Worn	Very weak	Worn	No	No
JC	1	Impr.	Unbroken				No	No
	1	I	Unbroken				No	No
JD	1	Impr.	Unbroken				No	No
	1	I	Unbroken				No	No
	2	P	Unbroken	Slightly thinner			Slightly	Slightly
JE	1	Impr.	Weak top & base				No	No
	1	I	Weak top & base				No	No
	2	P	Stronger	Slightly thinner		Slightly thinner	No	Yes
JF	1	Impr.	Weak top & base				No	No
	1	I	Weak top & base				No	No
JG	1	Impr.	Unbroken				No	No
JH	1	Impr.	Weak near base				No	No
	1	I	Weak near base				No	No
JI	1	Impr.	Unbroken				No	No
	1	I	Unbroken				No	No
JJ	1	Impr.	Weak near base				No	No
	1	I	Weak near base				No	No
JK	1	Impr.	Unbroken				No	No



	State	Check Letters	Other Features and Remarks	No. of stamps
HK	1	Normal		1
HL	1	Normal		1
JA	1	Normal		1
	2	Normal	Rather worn impressions	1
	2	Normal	E side NE square & below slightly doubled. 1 stamp very worn	3
IL	1	Normal		1
	2	Both thinned	Rather worn impression	1
	2	Both thinned	Break in top loop of 'B' develops in later impressions which are progressively worn	1
IC	1	Normal		1
	1	Normal		2
	2	'C' thicker	NW star slightly double	1
ID	1	Normal		1
	1	Normal		1
	2	'D' slightly thinner	Base line slightly thicker	1
IE	1	Normal		1
	1	Normal		1
IF	1	Normal		1
	1	Normal		3
	2	Slightly thinner		1
IG	1	Normal		1
	2	Normal	Strong impression, the E side is thicker than on the imprimatur	1
	3	Slightly thinner		1
IH	1	Normal		1
	1	Normal		3
	2	Bar of 'H' thinned		2
II	1	Normal		1
	1	Normal		1
	2	Thinner especially W 'I'	Base line thicker	1
IJ	1	Normal		2
	1	Normal		1
IK	1	Normal		1
	1	Normal		1
IL	1	Normal		1
	1	Normal		1
JA	1	Normal		1
JB	1	Normal	E side re-cut near base	1
	1	Normal	E side re-cut near base, Queen's Head very worn	1
JC	1	Normal		1
	1	Normal		1
JD	1	Normal		1
	1	Normal		1
	2	'D' thin at base of curve		1
JE	1	Normal		1
	1	Normal		1
	2	Normal		1
JF	1	Normal		1
	1	Normal	1 stamp shows signs of developing wear	2
JG	1	Normal		1
JH	1	Normal		1
	1	Normal		1
JI	1	Normal		1
	1	Normal		2
JJ	1	Normal		1
	1	Normal	Slight wear above value in both stamps	2
JK	1	Normal		1

	State	Impri- matur Imperf. Perf.	East Side	East Network	West Side	West Network	Postage Com- pressed	Value Compressed
JL	1	Impr.	Unbroken				No	No
	1	I	Unbroken				No	No
	2	P					Yes	Yes
KA	1	Impr.	Rather weak				No	No
	2	P	Stronger	Slightly thinner			Yes	Yes
KB	1	Impr.	Weak				No	No
	1	I	Weak			Slightly worn	No	No
C	2	P	Stronger			Restored	No	Slightly
	1	Impr.	Weak top & base				No	No
	1	I	Weak top & base				No	No
KD	2	P	Stronger	Slightly thinner			No	Yes
	1	Impr.	Lower ↓ recut upper part weak				No	No
	1	I	Lower ↓ recut upper part weak				No	No
KE	1	Impr.	Unbroken				No	No
	1	I	Unbroken				No	No
	2	P	Stronger	Slightly thinner			Yes	Yes
KF	1	Impr.	Weak				No	No
	1	I	Weak				No	No
	2	P	Stronger				Slightly	Yes
KG	1	Impr.	Unbroken		Weak		No	No
	1	I	Unbroken		Weak		No	No
	2	P		Slightly thinner	Stronger		No	No
KH	1	Impr.	Weak near base				No	Slightly
	1	I	Weak near base				No	No
	1	Impr.	Weak near top				No	No
KI	1	I	Weak near top				No	No
	2	P	Slightly stronger				Slightly	Slightly
	1	Impr.	Unbroken				No	No
KJ	1	I	Unbroken				No	No
	2	P	Stronger				Yes	Yes
	1	Impr.	Unbroken				No	No
KK	1	I	Unbroken		Weak		No	No
	2	I	Unbroken		Weak		No	No
	2	I	Unbroken		Stronger		Yes	Slightly
KL	1	Impr.	Weak near top				No	No
	1	I	Weak near top				No	No
	2	P	Weak top & base				No	No
A	1	Impr.	Weak top & base				Yes	Yes
	2	P	Slightly stronger				No	No
	1	Impr.	Weak		Weak		No	No
LB	1	I	Weak		Weak		No	No
	2	P	Stronger	Slightly thinner	Stronger		No	No
	1	Impr.	Weak near top				No	No
LC	1	I	Weak near top				No	No
	2	P	Stronger	Thinner			Yes	Yes
	1	Impr.	Weak near top				No	No
LD	1	I	Weak near top				No	No
	2	P	Rather weak	Slightly thinner			Slightly	Yes
	1	Impr.	Weak top & base				No	No
LE	1	I	Weak top & base				No	No
	2	P	Stronger				Yes	Yes
	1	Impr.	Unbroken				No	No
LF	1	I	Unbroken		Weak		No	No
	2	P	Stronger	Slightly thinner	Stronger		Yes	Yes
	1	Impr.	Unbroken				No	No
LG	1	I	Unbroken				No	No
	1	Impr.	Weak near base				No	No
	2	P	Weak near base				No	No
LH	1	I	Stronger				No	No
	2	P					No	No
	1	Impr.	Unbroken				No	No
LI	1	I	Unbroken				No	No
	1	I	Unbroken				No	No
	1	P	Unbroken				No	No



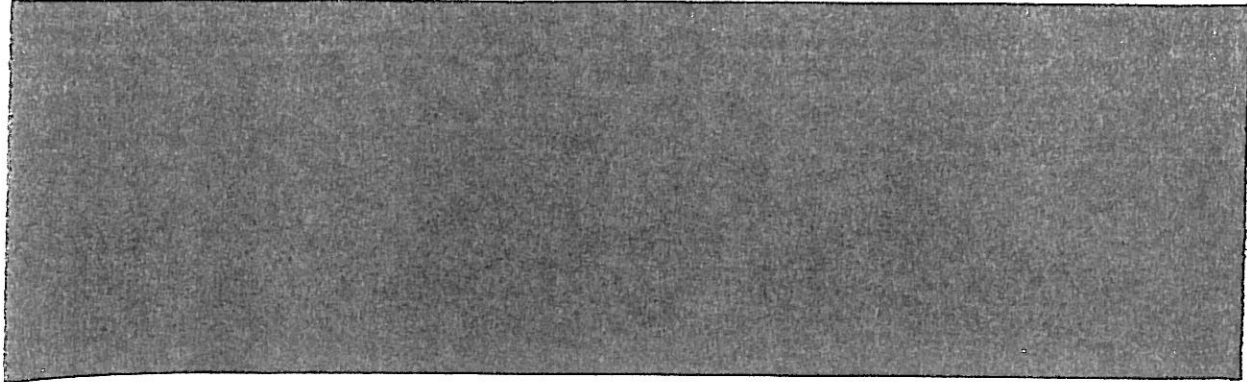
	State	Check Letters	Other Features and Remarks	No. of stamps
JL	1	Normal		2
	1	Normal		1
	2	Normal		1
KA	1			1
	2		E side NE square double. Base line thicker	1
KB	1	Normal		1
	1	Normal		1
	2	Both thinner		1
	1	Normal		1
	1	Normal		1
	2	Normal		1
KD	1	Normal		1
	1	Normal		1
KE	1	Normal		1
	1	Normal		1
	2	Normal	E star double. Base line thicker	2
KF	1	Normal		1
	1	Normal		1
	2	Both thinner		1
KG	1	Normal		1
	1	Normal		2
	2	Both slightly thinner	Base line thicker	1
KH	1	Bar of 'H' weak		1
	1	Bar of 'H' weak		1
KI	1	Normal		1
	1	Normal		1
	2	Slightly thinner	N side NW & E side NE square and base line all thicker	1
KJ	1	Normal		1
	1	Normal		1
	2	'K' thinner		1
KK	1	Normal		1
	1	Normal		1
	2	Normal	N side NW & E side NE square & base line all thicker	1
KL	1	Normal		1
	1	Normal		2
	1	Normal		1
	2	Normal		1
LB	1	Normal		1
	1	Normal	Worn above value	1
	2	Normal	Engraving above value restored	1
LC	1	Normal		1
	1	Normal		1
	2	Normal	Base line thicker. E side NE square thicker	1
LD	1	Normal	E side, lower 1/2 re-cut	1
	1	Normal	E side lower 1/2 re-cut	1
	2	Both thinner	E side NE square thicker. W side SW square slightly double	3
LE	1	Normal		1
	1	Normal		2
	2	Both thinner	Base line thicker. Blur lower W margin	2
LF	1	Normal	E side lower 1/2 re-cut	1
	1	Normal	E side lower 1/2 re-cut	1
	2	Slightly thinner	E side NE square thicker	2
LG	1	Normal		1
LH	1	Normal		1
	1	Normal		1
	2	Normal	Engraving to head very weak	1
LI	1	Slightly thinner	Engraving to head slightly stronger	1
	1	Normal		1
	1	Normal	Engraving to head very weak	1

DIE I, PLATE 173 — (contd.)

	State	Impr. matur Imperf. Perf.	East Side	East Network	West Side	West Network	Postage Com- pressed	Value Compressed
LJ	1	Impr.	Weak near base				No	No
	2	P		Thinner		Thinner	Yes	Yes
LK	1	Impr.	Weak near top				No	No
LL	1	Impr.	Unbroken				No	No
	1	I	Unbroken				No	No
MA	1	Impr.	Weak				No	No
	1	I	Weak				No	No
	2	P	Stronger				No	Yes
	1	Impr.	Weak				No	No
	2	P	Stronger				Yes	Yes
MC	1	Impr.	Weak near top				No	No
	1	I	Weak near top				No	No
	2	P	Stronger				No	Yes
MD	1	Impr.	Weak upper ;		Weak		No	No
	1	I	Weak upper ;		Weak		No	No
	1	P			Weak		No	No
	2	P		Thinner	Stronger	Thinner	Yes	Yes
ME	1	Impr.	Unbroken		Lower ; re-cut		No	No
	1	I	Unbroken		Lower ; re-cut		No	No
	2	P	Slightly stronger	Slightly thinner			Yes	Yes
MF	1	Impr.	Weak top & base				No	No
	2	P	Stronger				Slightly	Slightly
MG	1	Impr.	Unbroken				No	No
	1	I	Unbroken				No	No
	2	P	Stronger				No	Yes
MH	1	Impr.	Weak top & base				No	No
	1	I	Weak top & base				No	No
	2	P	Stronger	Slightly thinner			Yes	Yes
MI	1	Impr.	Weak near top				No	No
MJ	1	Impr.	Weak near base				No	No
	1	I	Weak near base				No	No
	2	P		Slightly thinner			Yes	Yes
MK	1	Impr.	Unbroken				No	No
	2	P					Slightly	Yes
ML	1	Impr.	Weak top & base				No	No
	2	P	Stronger				No	Yes
	1	Impr.	Weak				No	No
	1	I	Weak				No	No
	2	P					Yes	Yes
NB	1	Impr.	Rather weak				No	No
NC	1	Impr.	Weak near top				No	No
	1	I	Weak near top				No	No
	2	P	Stronger				Slightly	Yes
ND	1	Impr.	Weak near top				No	No
	1	I	Weak near top				No	No
	2	P	Stronger				No	No
NE	1	Impr.	Weak near top				No	No
	1	I	Weak near top				No	No
	2	P		Thinner			No	Yes
NF	1	Impr.	Weak				No	No
	1	I	Weak				No	No
	2	P	Stronger	Thinner			No	Yes
NG	1	Impr.	Unbroken				No	No
	1	I	Unbroken				No	No
	1	P	Rather weak	Slightly worn			No	No
	2	P	Slightly stronger	Slightly thinner			Slightly	Yes
NH	1	Impr.	Weak near base				No	No

	State	Check Letters	Other Features and Remarks	No. of stamps
LJ	1	Normal	Base line slightly thicker	1
	2	Normal		
LK	1	Normal		
LL	1	Normal		
MA	1	Normal		1
	1	Normal		2
	2	Normal		1
MB	1	Normal		1
	1	'B' thinner		1
M	1	Normal		1
	1	Normal	1 Stamp shows signs of wear	2
MD	2	'C' slightly thinner	'M' retouched top W serif. TRL E margin	1
	1	Normal	E side lower ↓ re-cut	
ME	1	Normal	E side lower ↓ re-cut	1
	1	Normal		1
	2	Normal	Both stars slightly thicker. TRL W margin	1
MF	1	Normal		1
	1	Normal		1
	2	Normal		1
MG	1	Normal		1
	1	Normal		2
MH	2	Normal	Base line slightly stronger	3
	1	Normal		
MI	1	Normal		2
	2	Normal	Both stars slightly thicker	1
MJ	1	Normal		
	1	Normal		1
	2	Normal	N side, NW square, W side SW square & base line all thicker	3
MK	1	Normal		
	2	Normal	Both stars slightly thicker. N side NW square thicker	1
ML	1	Normal	E side NE square slightly double at top	
	2	Normal	E side NE square normal. Base line thicker	1
NA	1	Normal	E side lower ↓ re-cut	
	1	Normal	E side lower ↓ re-cut	1
NB	2	Normal	Both stars slightly thicker	1
	1	Normal		
NC	1	Normal		
	1	Normal		1
ND	2	Normal	E side NE square slightly thicker	1
	1	Normal	Lower part E side re-cut, E side SE square strong	
NE	1	Normal	Lower part E side re-cut, E side SE square strong	1
	2	'D' thicker, retouched?	E side SE square double, also E side NE square and lower E frame	1
NF	1	Normal	W side weak, but re-cut near middle	
	1	Normal	W side weak, but re-cut near middle	2
NG	2	Normal		1
	1	Normal		1
NH	1	Normal		1
	2	Normal	E star slightly thicker	1
	1	Normal		

	State	Impri- matur Imperf. Perf.	East Side	East Network	West Side	West Network	Postage Com- pressed	Value Compressed	
NI	1	Impr.	Wear near base	Thinner Thinner			No	No	
	1	I	Weak near base				No	No	
	2	I	Stronger				Slightly	Yes	
NJ	2	P	Stronger	Slightly thinner			Slightly	Yes	
	1	Impr.	Weak top & base				No	No	
	1	I	Weak top & base				No	No	
NK	1	P					No	No	
	1	I	Unbroken				Slightly	Yes	
	1	I	Unbroken				No	No	
NL	1	Impr.	Weak near top				No	No	
	1	I					No	No	
	1	Impr.					No	No	
OA	1	Impr.	Unbroken				No	No	
	1	I	Unbroken				No	No	
	1	Impr.	Weak				No	No	
OB	1	I	Weak				No	No	
	1	I	Weak				No	No	
	1	Impr.	Weak near top				No	No	
OC	1	P	Weak near top	Weak Weaker			No	No	
	1	I	Weak near top				No	No	
	2	P	Weak near top				Yes	Yes	
OD	1	Impr.	Weak	Rather worn Restored			No	No	
	1	I	Weak				No	No	
	2	P	Weak				No	No	
OE	1	Impr.	Unbroken		Weak		Slightly	Slightly	
	1	I	Unbroken				No	No	
	1	P	Unbroken				No	No	
OF	2	P	Slightly stronger	Slightly thinner	Stronger		No	No	
	1	Impr.	Weak				Slightly thinner	Yes	Yes
	1	I	Weak				No	No	
OG	1	P	Weak	Slightly thinner	Weaker		No	No	
	1	P	Weak				No	No	
	2	P	Stronger				No	No	
OH	1	Impr.	Weak near base	Thinner	Slightly stronger		Slightly thinner	Yes	
	1	I	Weak near base				Yes	Yes	
	1	I	Weak near base				No	No	
OI	1	P		Slightly thinner	Weaker		No	No	
	1	P					No	No	
	2	P					No	No	
OJ	1	Impr.	Weak top & base	Slightly thinner	Stronger		Yes	Yes	
	1	I	Weak top & base				No	No	
	1	P					No	No	
OK	2	P	Slightly stronger	Slightly thinner	Weaker		No	No	
	1	Impr.	Weak top & base				No	No	
	1	I	Weak top & base				No	No	
OL	1	P	Stronger	Slightly thinner	Slightly stronger		Yes	Yes	
	1	Impr.	Unbroken				No	No	
	1	I	Unbroken				No	No	
PA	1	Impr.	Weak near top				No	No	
	1	I	Weak near top				No	No	
	2	P	Stronger				No	No	
PB	1	Impr.	Rather weak				Slightly	Yes	
	1	I	Rather weak				No	No	
	2	P	Slightly stronger				Yes	Yes	
PC	1	Impr.	Weak	Slightly thinner	Worn		No	No	
	1	I	Weak				No	No	
	1	Impr.	Unbroken				No	No	
PD	1	I	Rather weak		Weak		No	No	
	2	P	Stronger				Restored	No	Slightly
	1	Impr.	Weak				No	No	
PE	1	I	Weak				No	No	
	2	P	Stronger				No	No	
	1	Impr.	Weak top & base				Yes	Yes	
	1	I	Weak top & base				No	No	



	State	Check Letters	Other Features and Remarks	No. of stamps
NI	1	Normal		
	1	Normal		
NJ	2	Normal	Base line thicker	1
	2	Normal	Base line thicker	1
NJ	1	Normal	Dot in 2nd 'N' of 'Penny'	1
	1	Normal	Dot in 2nd 'N' of 'Penny'	1
	1	Normal	Dot in 2nd 'N' of 'Penny'	1
	2	Normal	Dot in 2nd 'N' of 'Penny'	1
L	1	Normal		1
	1	Normal		
OA	1	Normal		
OB	1	Normal		1
	1	Normal		
OC	1	Normal		1
	1	Normal	Worn head	
OD	2	Normal		1
	1	Normal		1
OE	1	Normal	I stamp very worn	2
	2	Normal		3
OF	1	Normal		3
	1	Normal		1
	1	Normal		3
OG	2	Normal	N side NE square slightly double	2
	1	Normal		1
OH	1	Normal		3
	1	Normal	E star thicker. W star double. N & W sides NW square & base line all thicker	
	1	Normal		2
	2	Normal	Engraving to head stronger	1
OJ	1	Normal		1
	2	Normal		2
OK	1	Normal		1
	2	Normal	Base slightly thicker. E side NE square thicker	2
OL	1	Normal		1
	1	Normal		
PA	2	Normal		1
	1	Normal		
PB	1	Normal		1
	2	Normal	Base line thicker	2
PC	1	Normal		
	1	Normal		1
PD	1	Normal	Head worn	1
	2	Normal	Base line thicker. E side NE square slightly thicker	1
PE	1	Slightly thinned		1
	1	Normal		1
	1	Normal		1

DIE I, PLATE 173 — (contd.)

	State	Impr- matur Imperf. Perf.	East Side	East Network	West Side	West Network	Postage Com- pressed	Value Compressed
PF	1	Impr.	Weak top & base	Slightly thinner			No	No
	1	I	Weak top & base				No	No
	2	P	Stronger				Slightly	Yes
PG	1	Impr.	Unbroken	Slightly thinner			No	No
	1	I	Unbroken				No	No
	2	P	Stronger				No	Yes
PH	1	Impr.	Weak top & base	Slightly thinner		Slightly thinner	No	No
	1	I	Weak top & base				No	No
	2	P	Slightly stronger				Yes	Yes
PI	1	Impr.	Unbroken	Slightly thinner			No	No
	1	I	Unbroken				No	No
	2	P	Slightly stronger				Yes	Yes
PJ	1	Impr.	Weak top & base	Slightly thinner			No	No
	1	I	Weak top & base				No	No
	1	Impr.	Weak near top				No	No
PK	1	I	Weak near top	Slightly thinner	Weak		No	No
	1	I	Weak near top				No	No
	2	P	Unbroken				Slightly	Slightly
PL	1	Impr.	Unbroken	Slightly thinner	Slightly stronger		No	No
	1	I	Unbroken				No	No
	1	Impr.	Weak				No	No
QA	1	I	Weak	Slightly thinner	Weak near base		No	No
	1	I	Weak				No	No
	1	Impr.	Weak top & base				No	No
QB	1	I	Weak top & base	Slightly thinner	Weak		No	No
	1	I	Weak top & base				No	No
	1	P	Weaker				No	No
QC	1	Impr.	Weak	Slightly thinner			No	No
	1	I	Weak				Slightly	Slightly
	2	P	Weak				No	No
QD	1	Impr.	Weak top & base	Slightly thinner			No	No
	1	I	Weak top & base				Slightly	Yes
	2	P	Stronger				No	No
QE	1	Impr.	Weak top & base	Slightly thinner			No	No
	1	I	Weak top & base				Slightly	Slightly
	2	P	Stronger				No	No
QF	1	Impr.	Weak at top	Slightly thinner			No	Yes
	1	I	Weak at top				No	No
	2	P	Weak at top				No	No
QG	1	Impr.	Unbroken	Slightly thinner			Slightly	Yes
	1	I	Weak near top				No	No
	2	P	Stronger				No	No
QH	1	Impr.	Weak near base	Slightly thinner			Slightly	Slightly
	1	I	Weak near base				No	No
	2	P	Stronger				No	No
QI	1	Impr.	Unbroken	Slightly thinner			No	No
	1	I	Weak near top				No	No
	2	P	Unbroken				No	No
QJ	1	Impr.	Weak	Slightly thinner			Slightly	Yes
	1	I	Weak				No	No
	1	Impr.	Unbroken				No	No
QK	1	I	Unbroken	Slightly thinner	Weak		No	No
	1	I	Unbroken				No	No
	1	P	Weaker				No	No
QL	1	Impr.	Unbroken	Slightly thinner	Weaker		No	Slightly
	1	I	Weaker				No	No
	1	Impr.	Weak				No	No
RA	1	I	Weak top & base	Slightly thinner			No	No
	1	I	Weak top & base				No	No
	2	P	Stronger				Yes	Yes
RB	1	Impr.	Weak near base	Slightly thinner			No	No
	1	I	Weaker				No	No
	2	P	Unbroken				Slightly	Yes
RC	1	Impr.	Unbroken	Slightly thinner			No	No
	1	I	Unbroken				No	No
	2	P	Unbroken				No	Yes

	State	Check Letters	Other Features and Remarks	No. of stamps
PF	1	Normal		
	1	Normal		
PG	2	'F' slightly thinner	E star thicker	2
	1	Normal		1
PH	1	Normal	Base line thicker	1
	1	Normal	No blur in E margin	1
	1	Normal	No blur in E margin. I stamp shows some wear	2
	2	Slightly thinner	Blur in E margin	3
PJ	1	Normal	No blur in E margin	1
	1	Normal	No blur in E margin	1
PK	1	Normal	Slight blur in E margin	1
	1	Normal		1
PL	1	Normal		1
	2	Normal	I stamp shows some wear	2
QA	1	Normal		1
	1	Normal	Signs of wear — head weak	1
QB	1	Normal		1
	1	Normal		1
	1	Normal	General signs of wear, head rather weak	1
	2	'B' thinner especially		1
QC	1	Base	Head weak, no other signs of wear	1
	1	Normal		1
QD	2	'C' thinner	Base line slightly thicker	2
	1	Normal		1
QE	1	Normal		2
	2	Normal		1
QF	1	Normal	Base line thicker	1
	2	Normal		2
C	1	Normal		1
	1	Normal		1
QH	2	Normal	Base line thicker	1
	1	Normal		1
QI	1	Both thinner	Bar of 'H' missing. E side NE square slightly thicker	2
	1	Normal		2
QJ	1	Normal		1
	2	Normal	Base line thicker below 'NNY'	3
QK	1	Normal		1
	1	Normal		1
QL	1	Normal		1
	1	Normal		1
RA	1	Normal		1
	1	Normal		1
RB	2	Normal		1
	1	Normal		1
RC	1	Normal	I stamp rather worn	2
	2	Normal	Base line thicker	1
	1	Normal		1
	2	Normal	Top line slightly thicker	1

	State	Impr- matur Imper. Perf.	East Side	East Network	West Side	West Network	Postage Cum- pressed	Value Compressed
RD	1	Impr.	Rather weak				No	No
	1	I	Rather weak				No	No
	2	P	Stronger	Slightly thinner			No	Yes
RE	1	Impr.	Unbroken				No	No
	1	I	Weak near top				No	No
	2	P	Slightly stronger				No	Yes
RF	1	Impr.	Weak top & base		Weak		No	No
	1	I	Weak top & base		Weak near base		No	No
	2	P		Thinner	Stronger		Slightly	Yes
RG	1	Impr.	Weak near top				No	No
	2	P					Slightly	No
RH	1	Impr.	Weak top & base				No	No
RI	1	I	Weak top & base				No	No
	1	Impr.	Weak top & base				No	No
RJ	1	I	Weak top & base				No	No
	1	Impr.	Weak near base		Weak		No	No
RK	2	P	Stronger	Thinner	Stronger	Thinner	Yes	Yes
	1	Impr.	Weak near top				No	No
	1	I	Weak near top				No	No
RL	2	I	Slightly stronger	Slightly thinner			Yes	Yes
	3	P		Thinner			Yes more so	Yes more so
	1	Impr.	Unbroken				No	No
SA	1	I	Weak top & base				No	No
	1	Impr.	Weak top & base				No	No
	1	P	Very weak				No	No
SB	1	Impr.	Weak top & base				No	No
	1	I	Weak top & base				No	No
SC	1	Impr.	Unbroken				No	No
	2	P	Slightly stronger				Yes	Yes
SD	1	Impr.	Weak top & base		Weak top & base		No	No
	1	I	Weaker		Weaker		No	No
	2	P	Stronger		Stronger		Yes	Yes
SE	1	Impr.	Weak near top				No	No
	1	I	Weak near top				No	No
	2	P					Slightly	Slightly
SF	1	Impr.	Weak near base				No	No
	1	I	Weak near base				No	No
	2	P	Slightly stronger			Slightly thinner	Yes	Yes
SG	1	Impr.	Weak near top				No	No
	1	I	Weak near top				No	No
	2	P	Stronger				No	No
SH	1	Impr.	Weak near base				No	No
	2	P	Stronger				No	Slightly
SI	1	Impr.	Weak top & base				No	No
	1	I	Weak top & base				No	No
	2	P					Slightly	Slightly
SJ	1	Impr.	Weak near base				No	No
	1	I	Weak near base				No	No
SK	1	Impr.	Unbroken				No	No
	2	P					Yes	No
SL	1	Impr.	Unbroken				No	No
	1	I	Unbroken				No	No
	1	P					No	No
TA	1	Impr.	Weak top & base				No	No
	1	I	Weak top & base				No	No
	2	P	Stronger				Yes	Yes
TB	1	Impr.	Unbroken				No	No
	1	I	Unbroken				No	No
	2	P	Stronger				No	No

	State	Check Letters	Other Features and Remarks	No. of stamps
RD	1	Normal		
	1	Normal	1 stamp rather worn	2
	2	Normal	E side NE square thicker	1
RE	1	Normal		
	1	Normal		1
	2	Normal	Base line slightly thicker	2
RF	1	Normal		
	1	Normal		1
	2	Normal	Base line thicker	1
RG	1	Normal		
	2	'G' slightly thinner	Base line thicker below 'NNY'	1
	1	Normal		1
	1	Normal		1
RI	1	Normal		
	1	Normal		1
RJ	1	Normal		
	2	Normal	Both stars thicker	2
RK	1	Normal		
	1	Normal		1
	2	Normal	One stamp shows extreme wear	2
	3	Normal	Base line thicker below 'ENNY', & double below K square. Both stars thicker	1
RL	1	Normal		
	1	Normal		2
	2	Normal	Base line thicker	2
SA	1	Normal		
	1	Normal		1
	1	Normal	Worn impression	1
SB	1	Normal		
	1	Normal		1
SC	1	Normal		
	2	Normal	E side NE square slightly double	2
SD	1	Normal		
	1	Normal		1
	2	Normal		2
SE	1	Normal		
	1	Normal		1
	2	'E' slightly thinner	'E' of 'Penny' weak line below	2
SF	1	Normal		
	1	Normal		2
	2	'F' slightly thinner	Base line below 'Penny' thicker	3
	1	Normal		1
	1	Normal		1
	2	Normal	E side NE square thicker. Base line thinner below 'E PE' & thicker below 'NY' of value	2
SH	1	Normal		
	2	Bar of H thinner	E side NE square thicker. Base line thinner below 'NY' of value	2
SI	1	Normal		
	1	Normal		1
	2	Normal	Base line below value slightly thicker	1
SJ	1	Normal		
	1	Normal		1
SK	1	Normal		
	2	'K' slightly thinner	Base of 'K' square double. Base line below 'NNY' thicker	1
SL	1	Normal		
	1	Normal		1
	1	Normal	1 stamp shows considerable wear	2
TA	1	Normal		
	1	Normal	1 stamp shows wear	2
	2	Normal	Base line below 'NNY' and 'A' square thicker	1
TB	1	Normal		
	1	Normal		2
	2	Both slightly thinner	Base line below 'NNY'	1

DIE I, PLATE 173 — (contd.)

	State	Impri- matur Imperf. Perf.	East Side	East Network	West Side	West Network	Postage Com- pressed	Value Compressed
TC	1	Impr.	Weak top & base	Thinner		Slightly thinner	No	No
	1	I	Weaker				No	No
	2	P	Stronger				No	No
TD	1	Impr.	Weak top & base				Slightly	Slightly
	2	P	Stronger				No	No
TE	1	Impr.	Weak near top	Slight wear Restored Thinner		Slight wear Restored	Slightly	Yes
	1	P	Weak near top				No	No
	2	P	Stronger				No	No
TF	1	Impr.	Strong				No	More so
	1	I	Weak near base				Slightly	No
	2	P	Stronger				No	No
TG	1	Impr.	Weak top & base				No	Yes
	1	I	Weak top & base				No	No
	2	P	Stronger				No	No
TH	1	Impr.	Weak near base				Yes	Yes
	2	P	Weak near base				No	No
	1	Impr.	Weak top & base				Slightly	Yes
TI	2	P	Stronger				No	No
	1	Impr.	Weak top & base				Yes	Yes
TJ	1	Impr.	Weak top & base				No	No
	2	P	Stronger				Yes	Yes
TK	1	Impr.	Unbroken				Yes	Yes
	1	I	Unbroken				No	No
	2	P	Unbroken				No	No
TL	1	I		Worn Restored		Worn Restored	Yes	Slightly
	2	P					Spreading	Spreading
	2	P					Yes	Yes

Types of Cancellations on Advertiser's Voucher Copies

Sam Lawrence

The following list is of unrecorded items to be added to the S.G. Specialised Catalogue, Vol. 2, 5th Edition. The various types of cancellations can be found in Appendix F2 (Booklet Pane Pre-Cancellations) to which reference should be made.

1. K.G.V — Type G exists on NB2 and NB5 (from a 2s booklet dated 5th April 1913).
2. K.G.V — 3s booklet, dated November 1924, with a Type F cancellation, so far only known on the Downey Head issues of 1911-12. (This booklet thus has a cancellation which is over twelve years late!)
3. K.G.V — I have the remnants of a 3s booklet with half of the ½d pane and all of the 1½d pane (and the booklet contained the 1d pane too). It is dated February 1923 and is cancelled with the Type 24 overprint. The panes are NB12, NB13 and NB14. This strike was discontinued in the 1920's, so is over eight years late!
4. K.G.VI — A 2s booklet, dated 11th January 1938, in which all of the panes are cancelled with the Type 33 overprint but are not punched.
5. A new Type is to be added to the growing list of cancellations — to be Type L. The new Type is a single ring London E.C cancellation, slightly larger, with the lettering in a different layout. The example I have is "LONDON E.C./15 AU/21/N".
6. Types G and I cancellations are to carry a footnote which will in effect merge these strikes as many variations exist and it is impractical to catalogue each variation. My guess is that as the steel cancellors wore out they were replaced by the makers. As they had to be made by hand, no two would ever be alike and although some of the differences would be marginal, some differences would be striking. I saw one recently in which all of the lettering and numerals were squared off in the modern idiom.

	State	Check Letters	Other Features and Remarks	No. of stamps
TC	1	Normal	1 stamp shows signs of wear	2
	2	'C' thinner		
TD	1	Normal	Top line extends E	1
	2	Normal	E side NE square thicker. Top line extends E	
TE	1	Normal	T.R.L. in E margin	1
	2	'E' thinner		2
	3	Both thinner		1
TF	1	Normal	TRL in E margin. Dividing line between F & G shortened	1
	2	Both thinner		2
TG	1	Normal	Base line below 'NNY' thicker, & below G square slightly double. Worn impression	1
	2	Normal		1
	3	Both thinner		1
TH	1	Normal	E star thicker	1
	2	Normal		
TI	1	Normal	Base line thicker 'NNY'	2
	2	Normal		
TJ	1	Normal	E side NE square thicker. Base line thicker	2
	2	'J' thinner		
TK	1	Normal	E star & E side NE square thicker	1
	2	Slightly thinner		1
TL	1		Worn impression	1
	2			1

Destruction of Mulready Stationery

H. Dagnall

Adverse criticism of the Mulready design caused the rapid withdrawal of the envelopes and letter sheets. This is well-known, but the fate of the remaining stock of these items remains a mystery. However, a find reported by one of my correspondents may provide a clue, as I will show.

Rowland Hill had great hopes of the success of the Mulready stationery and expected it to prove very popular; a large supply had been prepared so when they were withdrawn the quantity to be disposed of was considerable. They were kept (presumably in the Somerset House warehouse) until 1862 and then destroyed. This task proved to be more difficult than at first expected since there was the security aspect to be considered. The oft-quoted description by Rowland Hill on this subject is the only contemporary account known —

... the public rejection of the Mulready envelope was so complete as to necessitate the destruction of nearly all the vast number prepared for issue. It is a curious fact that a machine had to be constructed for the pur-

pose; the attempt to do the work by fire in close stoves (fear of robbery forbade the use of open ones) having absolutely failed.

Most philatelic writers are content to state just this: that they were destroyed and a special machine was made for the purpose. A few writers (e.g. Sir John Wilson, the late curator of the Royal Collection) have made the assumption that they were burnt, but personally I do not think that Rowland Hill's remark can be unambiguously interpreted in this way. If destruction was by burning then surely he would have said that a special stove was constructed; but he used the word *machine* which implies a mechanical device. His early connection with railways and his later invention of a very successful newspaper printing press show that he had some engineering experience, and it would be unlikely that he would use the word 'machine' instead of 'stove' even if it had a mechanically-produced forced draught.

In view of this I had many years ago formed the opinion that destruction was very likely to