



Christmas Seals

of the

United States

Revision 2.0e

Designed by Don Denman
Published By StampSmarter.com

©Copyright 2018

You may use this file for the personal use but you may not use it in any commercial activity. This includes offering this file as a download on any web site other than StampSmarter. You may modify the file(s) but you cannot remove the Stamp Smarter branding.



Christmas Seals

1907



Perf 14
'Merry Christmas' only



Perf 14
'Merry Christmas / Happy New Year'

1908



Perf 12/14
Square corner frame lines



Perf 12
Rounded corner frame lines

1909



Perf 12

1910



Perf 12

1911



Perf 12
Solid End in House



Perf 12
Lined End in House



Perf 8 1/2 Vert.

Christmas Seals

1912



Perf 12

1913



Perf 12
Poinsettias and Circles



Perf 12
No Poinsettias



Perf 12
No Poinsettias and Circles

1914



Perf 12

1915



Perf 12

1916



Perf 12

1917



Perf 12

Christmas Seals

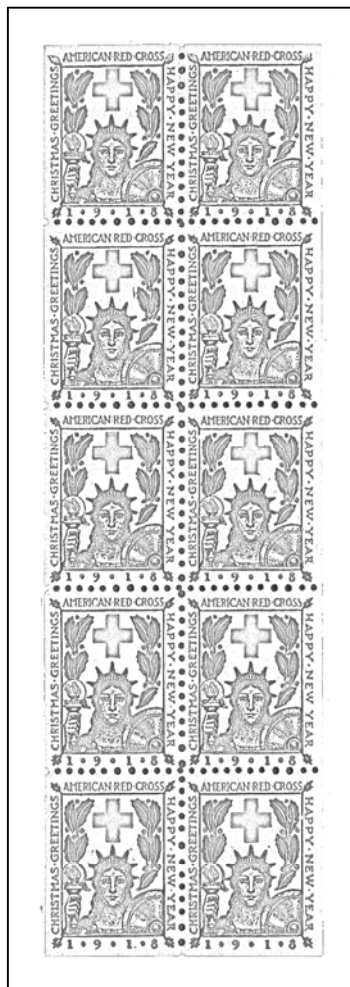
1918



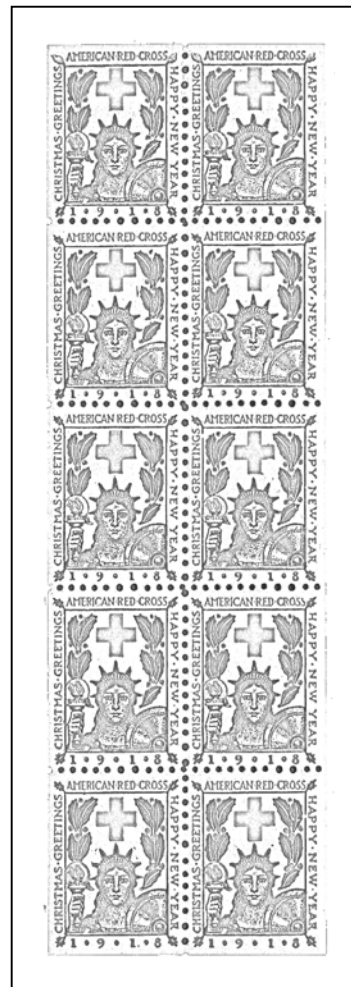
Perf 12
'American Red Cross' 15mm long



Perf 12
'American Red Cross' 15 1/2 mm long



Booklet of 10
'American Red Cross' 15mm long



Booklet of 10
'American Red Cross' 15 1/2 mm long

Christmas Seals

1919



Perf 12, 12½
Plume at right side of Santa's cap



Perf 12½
No plume, white dot in center of band

1920



Perf 12, 12½
Size 18 x 22mm

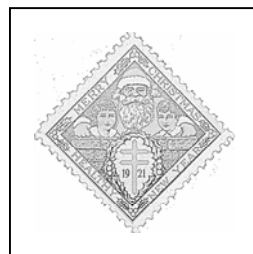


Perf 12½
Size 18½ x 22½ mm

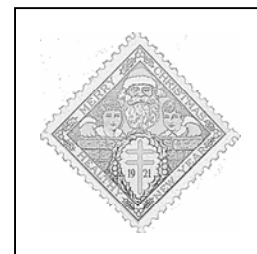
1921



Perf 12½
Chimney shading & faces
are diagonal lines



Perf 12½
Chimney shading & faces
are horizontal lines



Perf 12
Chimney shading & faces
are diagonal lines

Christmas Seals

1922



Perf 12½

1923



Perf 12½

1924



Perf 12½

1925



Perf 12, 12½
Side red lines at '1925' do not
join red tablet below



Perf 12½
Side red lines at '1925' do
join red tablet below



Perf 12½
Lines not joined and shorter
rays around flames

1926



Perf 12½

Christmas Seals

1927



Perf 12



Perf 12½
No Dot



Perf 12½
One Large Dot

1928



Perf 12½
Broken shading on sails
Dots in flag regular



Perf 12½
Broken shading on sails
Dots in flag spotty



Perf 12½
Unbroken shading on sails
Dots in flag regular

1929



Perf 12, 12½
Vertical broken gum



Perf 12½
Smooth gum

Christmas Seals

1930



Perf 12, 12½
Vertical broken gum



Perf 12½
Smooth gum

1931



Perf 12½
Horiz. broken gum



Perf 12, 12½
Horiz. broken gum



Perf 12½
Smooth Gum

Christmas Seals

1932



Perf 12½ x 12¼
Red spur on bottom frame



Perf 12



Perf 12½



Perf 12½
Red spur on bottom frame

1933



Perf 12



Perf 12½



Perf 12
'Long Coat' Error

Christmas Seals

1934



Perf 12½ x 12¼



Perf 12½



Perf 12½



Perf 12½

1935



Perf 12½ x 12¼



Perf 12½

Christmas Seals

1936



Perf 12½ x 12



Perf 12½

1937



Perf 12 x 12½



Perf 12½

1938



Perf 12½ x 12



Perf 12½

Christmas Seals

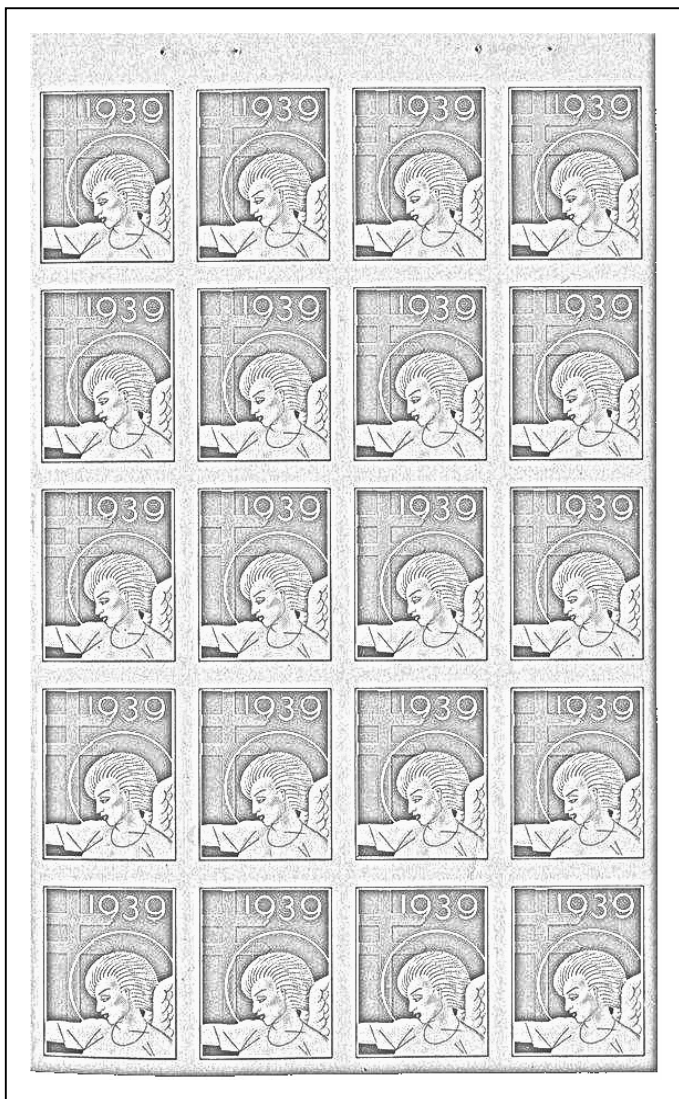
1939



Perf 12½ x 12



Perf 12½



Christmas Seals

1940



Perf 12½ x 12



Perf 12½ x 13



Perf 12½

1941



Perf 12½ x 12



Perf 12½

1942



Perf 12 x 12½



Perf 12½

Christmas Seals

1943



Perf 12½ x 12



Perf 12½

1944



Perf 12½ x 12



Perf 12½

1945



Perf 12½ x 12



Perf 12½

Christmas Seals

1946



Perf 12½ x 12



Perf 12½

1947



Perf 12 x 12½



Perf 12½

1948



Perf 12 x 12½



Perf 12½

Christmas Seals

1949



Perf 12 x 12½



Perf 12½

1950



Perf 12½ x 12



Perf 12½

1951



Perf 12½ x 12



Perf 12½

Christmas Seals

1952



Perf 12½ x 12



Perf 12½



Perf 12½
Overprinted "Ryukyus"

1953



Perf 13



Perf 12½

Christmas Seals

1954



Perf 13



Perf 12½



Perf 11

1955



Perf 13



Perf 12½



Perf 11

Christmas Seals

1956



Perf 12½ x 12



Perf 12½



Perf 11



Perf 12½
Puerto Rico

Christmas Seals

1957



Perf 13



Perf 12½



Perf 11



Perf 10½ x 11



Perf 10½



Perf 13
Puerto Rico

Christmas Seals

1958



Perf 13



Perf 12½



Perf 10½ x 11



Perf 11



Perf 13
Puerto Rico

Christmas Seals

1959



Perf 13



Perf 12½



Perf 10½ x 11



Perf 11



Perf 10½



Perf 13
Puerto Rico

Christmas Seals

1960



Perf 12½



Perf 12½ x 12



Perf 11 x 10½



Perf 11

Christmas Seals

1961



Perf 12½



Perf 12½ x 12



Perf 11 x 10½



Perf 11

Christmas Seals

1962



Perf 13



Perf 12½



Perf 13



Perf 12½

Christmas Seals

1963



Perf 12½



Perf 12½ x 12

1964



Perf 11 x 10½



Perf 11

Christmas Seals

1965



Perf 12½



Perf 11



Perf 13

Christmas Seals

1966



Perf 12½



Perf 10½



Perf 11

Christmas Seals

1967



Perf 13



Perf 12½



Perf 10½

Christmas Seals

1967



Perf 11



Perf 11 x 10½

Christmas Seals

1968



Perf 13



Perf 10½ x 11



Perf 10½



Perf 11



Perf 12½

Christmas Seals

1969



Perf 13



Perf 12½



Perf 10½ x 11



Perf 11



Christmas Seals

1970

Christmas Seals

1971



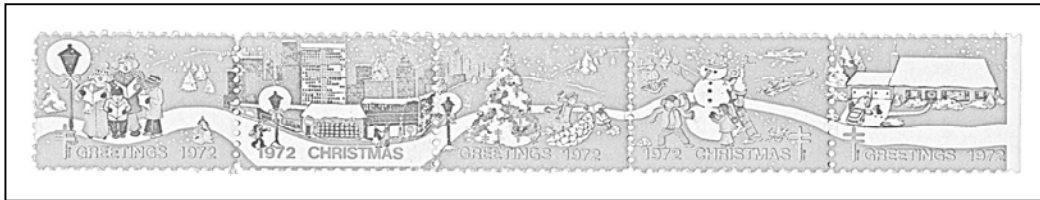
Perf 12½



Perf 11

Christmas Seals

1972



Perf 13



Perf 12½



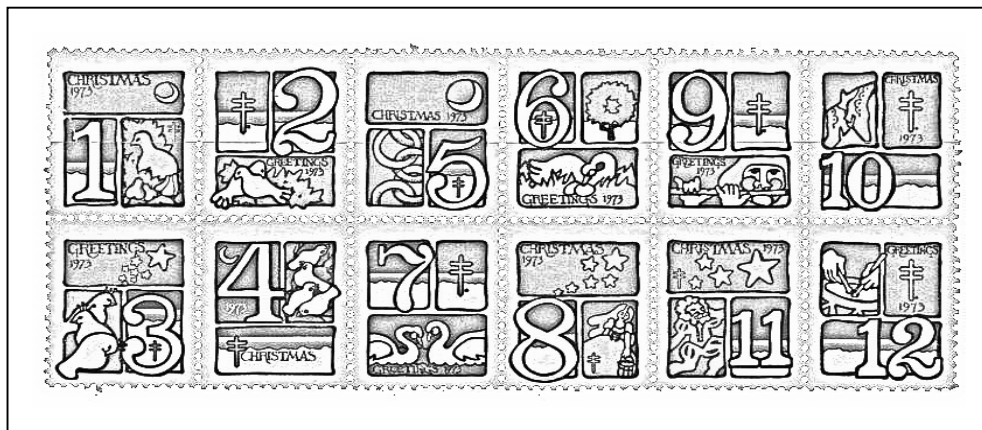
Perf 11

Christmas Seals

1973



Perf 12½



Perf 11

1974



Perf 12½



Perf 11



Christmas Seals

1975



Christmas Seals

1976



Christmas Seals

1977



Christmas Seals

1978



Christmas Seals

1979



Christmas Seals

1980

Christmas Seals

1981



Perf 11



Perf 12½



Perf 13

1982



Perf 11

Christmas Seals

1982



Perf 12½



Perf 13

Christmas Seals

1983



Perf 11



Perf 12½



Perf 13

Christmas Seals

1984



Perf 11

Christmas Seals

1984



Perf 12½

Christmas Seals

1984



Perf 13

Christmas Seals

1985



Perf 11



Perf 12½



Perf 13

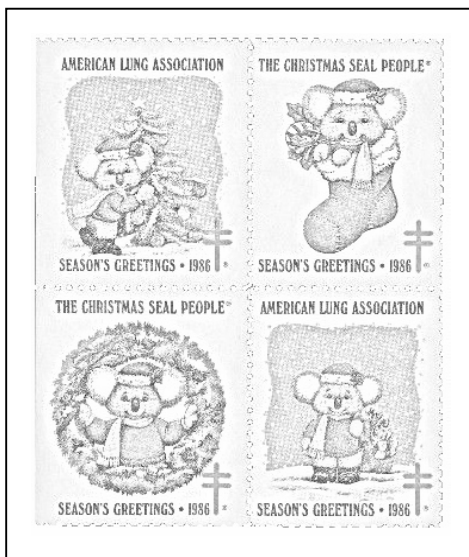


Silver Foil

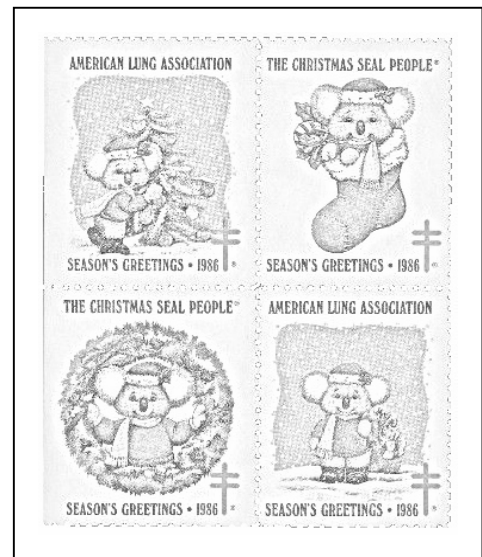


Gold Foil

1986



Perf 12½



Silver Foil

Christmas Seals

1987



Perf 11½



Perf 12½



Perf 14½



Silver Foil

Christmas Seals

1988



Perf 11½



Perf 12½



Silver Foil

Christmas Seals

1989



Perf 11½



Perf 12½



Silver Foil

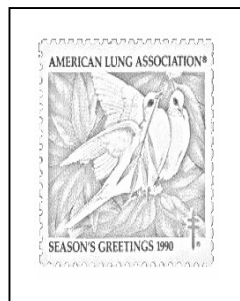
1990



Perf 10



Perf 10½ x 10



Perf 12



Silver Foil

Christmas Seals

1991



Perf 10½ x 11



Perf 11



Perf 12

Christmas Seals

1991



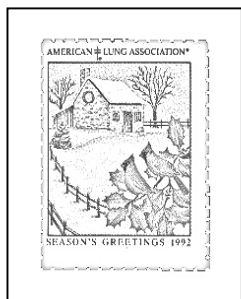
Silver Ink



Silver Foil

Christmas Seals

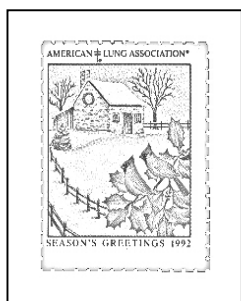
1992



Perf 10½ x 10



Perf 11



Perf 12½



Silver Ink

Christmas Seals

1993



Perf 12¼



Perf 12½



Silver Ink

1994



Perf 12¼



Self Adhesive



Roulette



Christmas Seals

1995



Christmas Seals

1996

Christmas Seals

1997



Perf 12 1/4



Roulette



Self Adhesive



Self Adhesive with Perfs

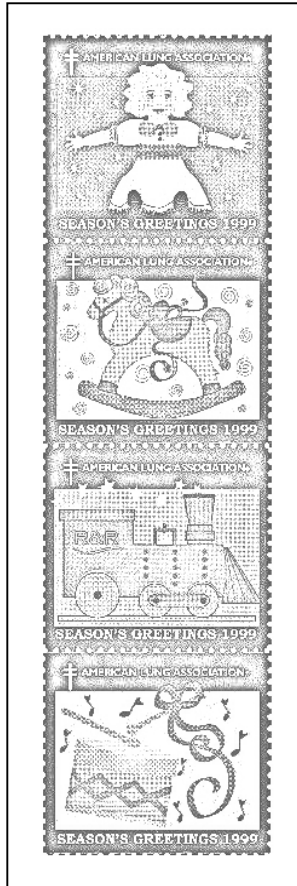


Christmas Seals

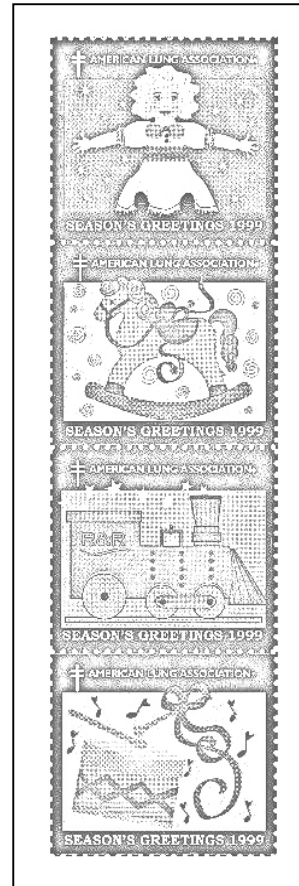
1998

Christmas Seals

1999



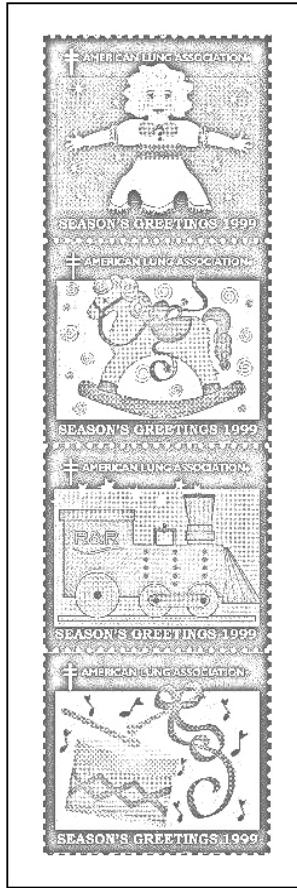
Perf 9/8



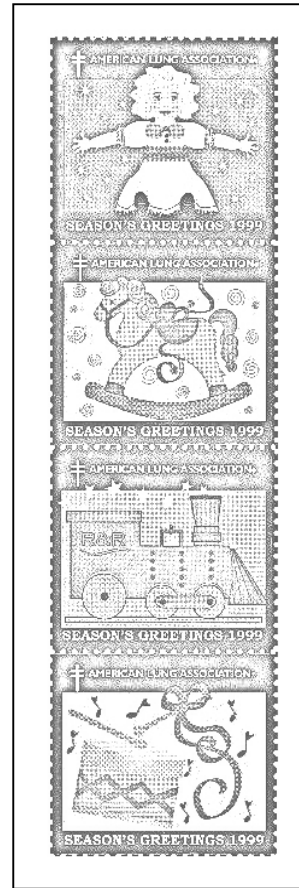
Roulette

Christmas Seals

1999



Self Adhesive



Self Adhesive on Glossy Paper

Christmas Seals